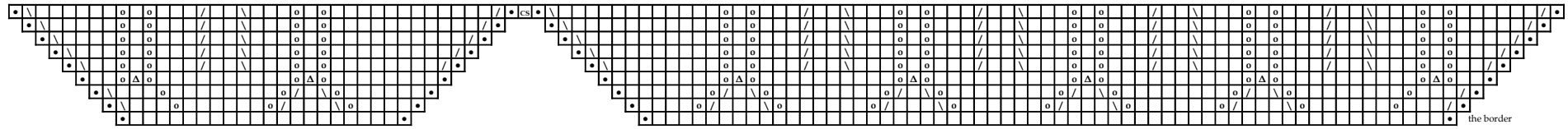
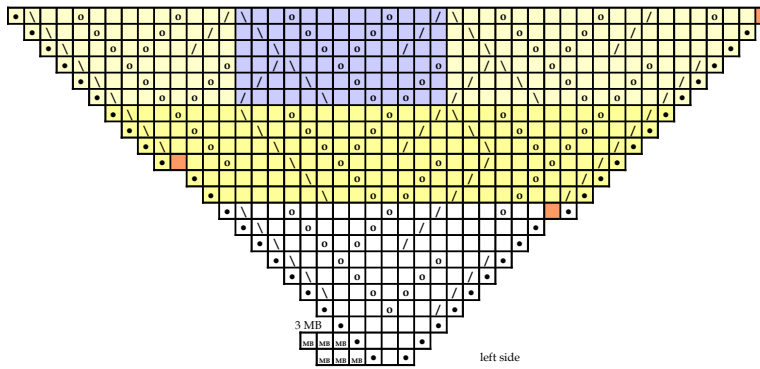
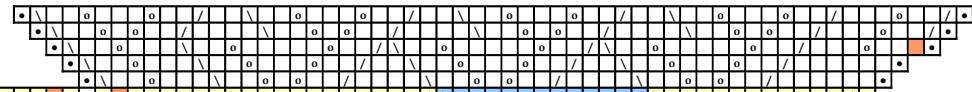


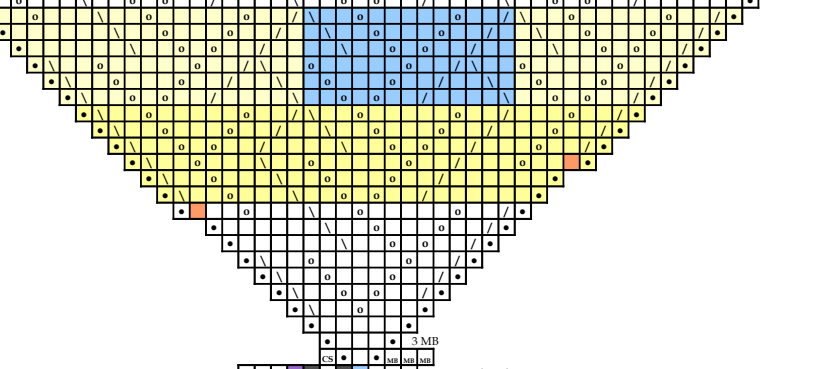
# White day shawl / Candy shawl



the border



left side



right side

- CS center stitch (knit)
- MB 3 border sts (always knit)
- knit on rs and purl on ws
- o year over
- yo between 2 sts (pick up between 2sts twist it and knit)
- // k2tog (knit two sts together)
- \ s1, k1, pss0
- △ sk2p (slip one knitwise, k2tog, pss0)
- no sts

- m. centale
- 3 m. de bord
- 1 m. end sur l'end
- 1 jeté
- 1 jeté entre 2 m.
- 2 m. ens à l'end
- glisser 1 m à l'end, 1 m end, passer la m glissée par dessus la m tricotée
- glisser 1 m à l'endroit, tricoter 2 m ens, passer la m glissée par dessus la m tricotée

beginning



Ania « Créations de Nivania »

<http://ilamolohatzleof.canalblog.com>