

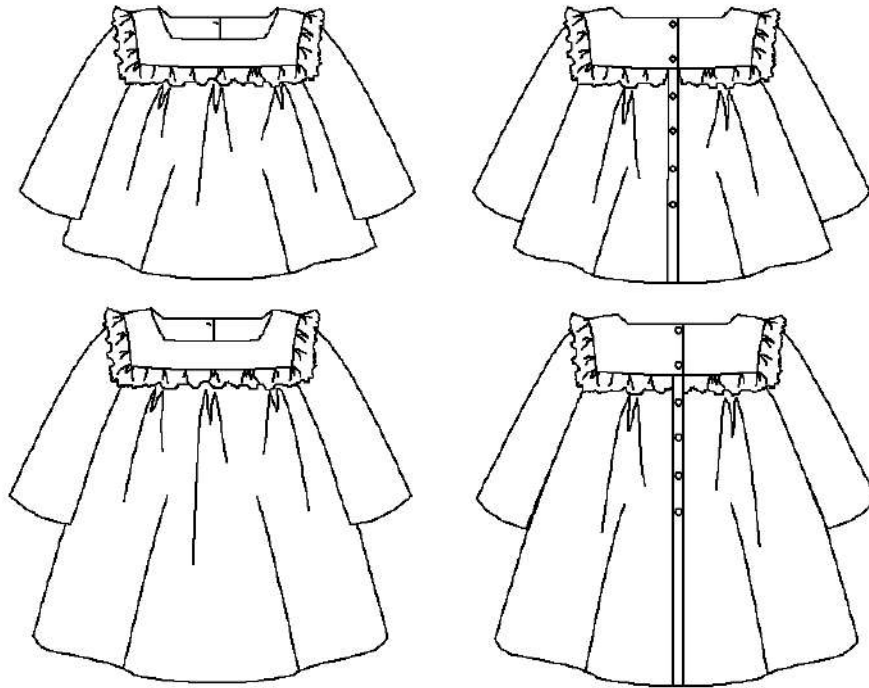
p&m®

BIANCA WITH LONG SLEEVES



BLOUSE OR DRESS BIANCA with LONG SLEEVES

Sizes 2, 3, 4, 6, 8 and 10



PREAMBLE

This long-sleeve dress or blouse is based upon the Bianca pattern available here <http://papillonnetmandarine.bigcartel.com/product/english-pattern-bianca>.

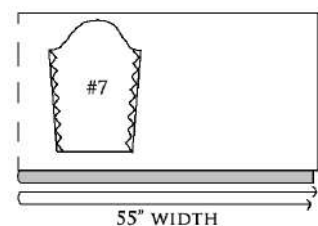
MEASURES (cm and yard)

	2Y	3Y	4Y	6Y	8Y	10Y
Fabric for the long sleeve blouse (55" width)	130 cm 1½ yd	140 cm 1⅝ yd	150 cm 1¾ yd	160 cm 1¾ yd	170 cm 1⅞ yd	180 cm 2 yd
Fabric for the long sleeve dress (55" width)	160 cm 1¾ yd	170 cm 1⅞ yd	180 cm 2 yd	190 cm 2¼ yd	200 cm 2¼ yd	220 cm 2½ yd

PATTERN PIECES

- Pieces #1 to #6, from original pattern,
- Sleeves #7, cut twice and overcast/serge the long edges of both sleeve.

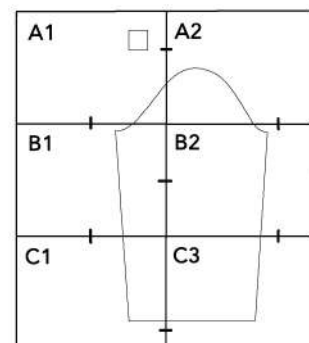
Pattern piece #7 is in the "BIANCA manche-sleeve.pdf" file included with this tutorial.



Make sure you print this pattern at 100%, or with « no scaling » checked on your printer. Use the 5x5cm square to check that you have printed the pattern right.

You can cut the borders around the pages, but it's not compulsory. Tape the pages together following the page layout below. Match the small rectangles, but lining the edges of the pages is of no importance.

You can then cut the chosen size of the sleeve directly from the printed pattern and lay it on your fabric (seam allowances are included).



NB:

If you want to modify the sleeve length (to shorten them for instance), you can cut them to the desired length without any trouble. Assembling the garment will proceed exactly as explained below.

ASSEMBLING

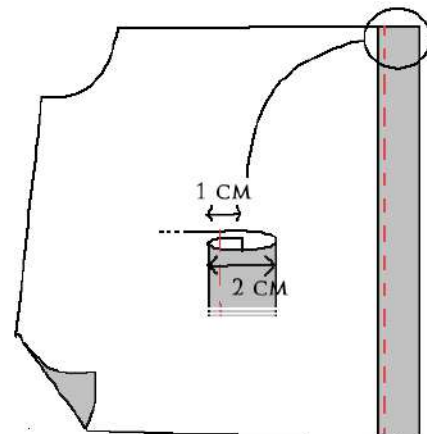
➤ Follow the steps 1 to 3 of the sleeveless version:

- 1- Sewing the shoulders,
- 2- Ruffle,
- 3- Sewing the ruffle to the yoke.

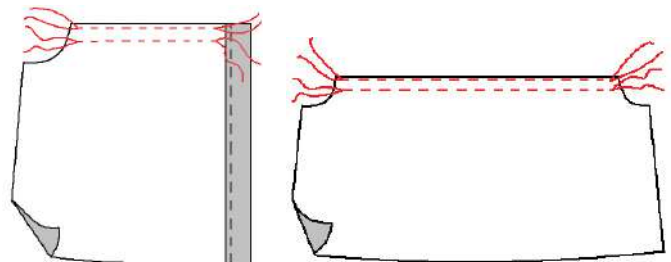
➤ Then proceed as indicated below:

Button placket

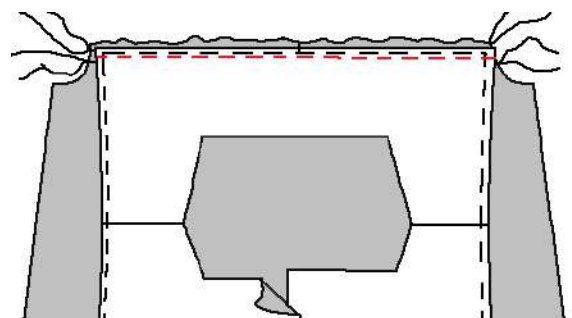
- Turn 1cm over on the wrong side of both back openings of Back #4, then turn again 2cm along the fold line. Press.
- Edgestitch the plackets in place.

**Gathers**

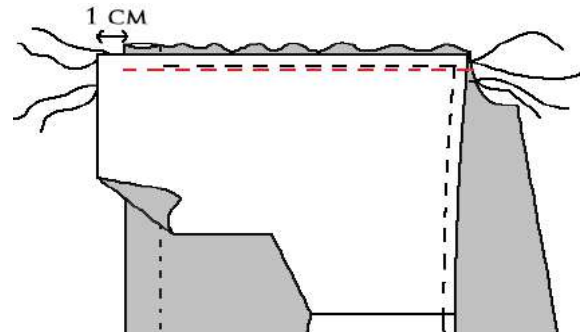
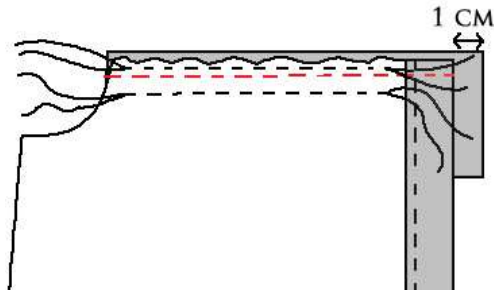
- Sew two lines of gathering stitches between the ★ on each of the top of Back #4 and Front #3. Proceed like the ruffle: a row of gathering stitches is a line of long straight stitches, one is stitched at 0.5cm (1/8"-1/4") from the raw edge and the second is stitched 1.5cm (5/8") away from the raw edge, without any backstitching at the beginning or the end of the row. To gather your fabric, pull both bobbin threads.

**Sewing the yoke to the bottom of the dress/blouse**

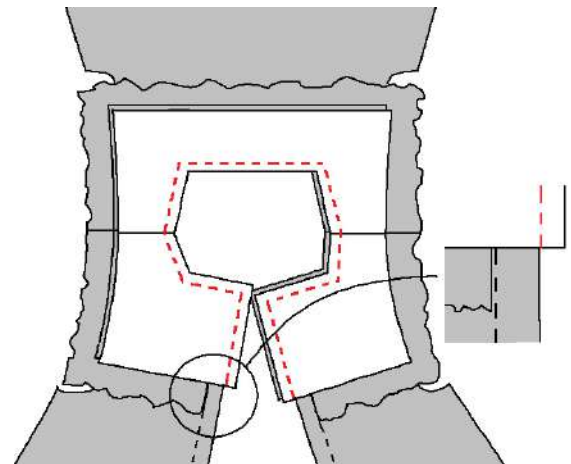
- With right sides together, pin the gathered edge of Front #3 to the bottom of Yoke Front #1 matching center fronts
- Caution:** do not use the yoke lining here.
- Match the length of gathered Front #3 to the Yoke's and distribute the gathers evenly (pull the bobbin threads again if necessary).
- Stitch at 1cm (3/8") between the gathering lines.
- Nota bene:** do not catch the ruffle while sewing.
- Press the seam up.



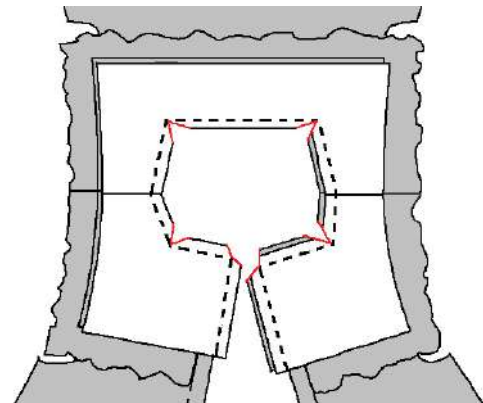
- With right sides together, pin the gathered top edge of each Back #4 to each corresponding Yoke Back #2, matching center back markings and having the Yoke Back #2 overhangs by 1cm.
- Stitch at 1cm (3/8") between the gathering lines and do not catch the ruffle while sewing.
- Press the seam up.



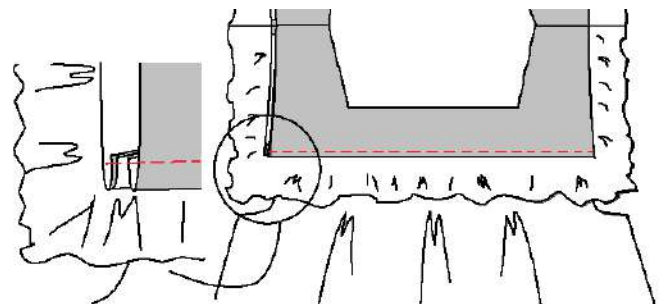
- With right sides together, pin the yoke lining to the main yoke, matching *center back/center front/shoulder*.
- Stitch at 1cm from the neckline and sew along the back openings continuously. The seamline along the back openings should be in line with the edge of the button plackets of Back-#4.



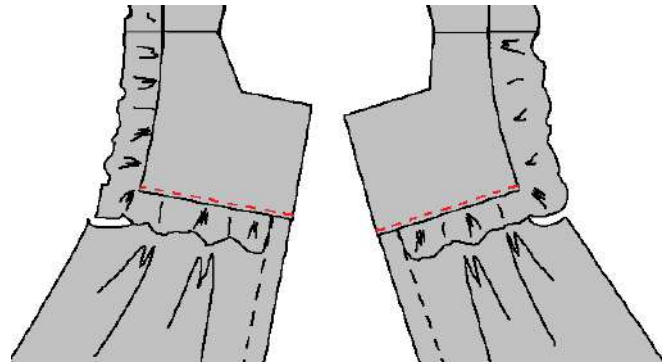
- Clip the corners of the neckline and poke the corners out.
- Turn the garment on the right side and press well. Yoke and Yoke lining are now wrong sides together.



- Turn 1cm on the wrong side of the bottom of the front yoke lining. Place the fold against the seamline between the front and the front yoke (NB: the ruffle is between the two layers)
- You can either sew this hem by hand on the wrong side or, if you prefer using a machine, stitch in the ditch from the right side, sewing through all the layers.

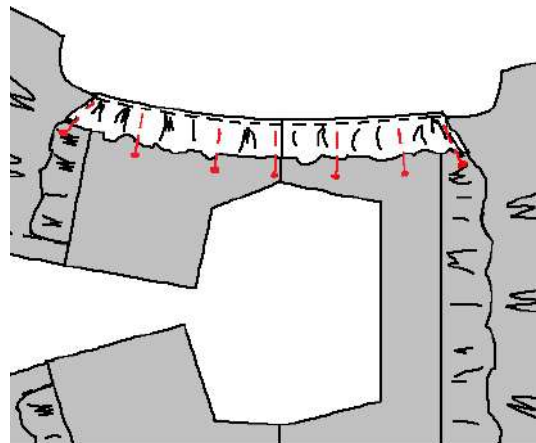


- Repeat for the Back yoke linings



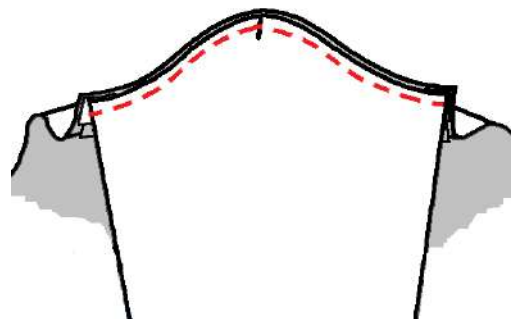
Assembling the sleeves

- With right sides together, place the ruffle against the yoke, at the armholes. You can pin it in place to prevent it from getting caught.



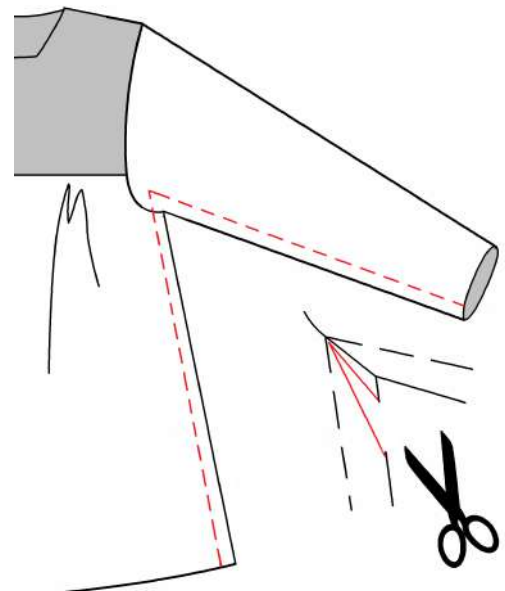
- With right sides together, pin Sleeves #7 to the armholes matching *center back/center front/shoulder*.
- Stitch at 1cm from the armholes.
- Overcast the seam allowances together and press them towards the sleeves.

Nota bene: the ruffle shouldn't be a hindrance at any time.



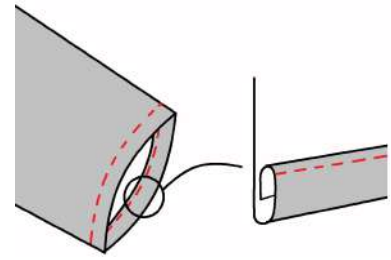
Side seams and underarm seams

- With right sides together, pin the side seams and the underarms.
- In one continuous seam, stitch the sides and the underarms at 1cm from the edge.
- Clip the curve of the armpits then press the seams open.
- Turn the garment on the right side.



Hemming the sleeves

- Turn 1cm on the wrong side of the bottom of each sleeve, then turn 2cm again. Press.
- Stitch from the right side as close to the edge of the hem as possible.



And then, hem the dress and sew buttons and buttonholes, as explained in the instructions.

Voilà! So, do you like it?!

