

Rosace

The rosaces on the stained glass windows... wonders!
With this bright vision I offer this model of aerial shawl in a semicircle.

A KaL inspired (very freely) by the patterns of the Shetland Islands among others ... lace with basic stitches. The steps are given for 1 or 2 days of knitting. If you need more time, take it !! The explanations are given in writing row by row and

for the lace sections with diagrams integrated into the pattern, or in the files of the Facebook group « Tricote pas tout », specially for the last days. I made a sample ... know that as with any shawl it is indicative: depending on your choice of yarn, your corresponding needle size, you will have a smaller or larger result.

Enjoy knitting !!



Material :

Option 1 : 2 balls of [Zauberball 100](#) and 4 balls of [d'Algasoie in a coordinated color](#). Circular needles 4mm.

Option 2 : 4 balls of [Gradient Schoppel Wolle](#) and circular needles 4,5mm.

Stitch markerse (12) yarn or tapestry needle, scissors, blocking material.

Points and abbreviations :

st : stitch

k : knit

p:purl

K2tog: knit 2 together.

(...) x...: knit the pattern in parentheses as many times as indicated after the "x":

Yo : Yarn over

SKP : slip 1, knit 1, Pass over

SK2P :slip 1, Knit 2 together, Pass over.

R : row.

Garter stitch :knit every stitches , every rows.

M : stitch marker (to slide from the left needle to the right as you knit, they are there to define the different patterns and help you find your way in your work).

Note: I will not put a number in front of the Yo, SKP, SK2P, 2 K2togr, because, with some exceptions (and it will be indicated !!), they should only be done once.

Gauge : needles 4mm, stocking stitch 10/10cm : 30 rows /19stitches .

Pattern Camille Delahaie- [les aiguilles de camille.com](http://les.aiguilles.de.camille.com)

Any commercial use of this pattern and its achievements is prohibited without the prior written consent of the author.

Work :

Day 1 :

Cast on 3 sts, with the 2 yarns knitted together (for option 1), make 6 rows of garter sts, in the last row, do not turn the piece, collect 3 stitches sideways and 3 stitches below. 9 stitches. If you're having trouble, watch this little video :<https://youtu.be/t7Qv-bYYO1Y>, I find it very explicit and well done.

The number of stitches per row is only specified when it changes, which is why it is not noted for each row.

Make your wrong side row by kknitting your 9 stitches. And start to knit the shawl :

R 1 (right side row) : k2, (Yo, k1)x5, Yo, k2. (15st)

R 2 (wrong side row) : k2, *p*, finish the row with k2.

R 3 and 5:*k*

R4 and 6 :k2, *p*, finish the row with k2.

R7 : k2, M, Yo, k1, Yo, M, k1, M, Yo, k1, Yo, M, k1, M, Yo, k1, Yo, M, k1, M, Yo, k1, Yo M, k1, M, Yo, k1, Yo, M, k1, M, Yo, k1, Yo, M, k2. (27st)

At the end of this row, you will have positioned your markers (12) for the rest of the shawl, your knitting sections will be delimited and easier to count to check the progress of your work. The markers are indicated on the rows when it is useful. When they are not shown, knit normally and when you get to a marker, slip it on the opposite needle without knitting and then continue.

R8 and 9 : *k*

R10 :k2, *p*, finish the row with k2.

R11 : *k*

R12 : k2, *p*, finish the row with k2.

R13 : k2, (M, Yo, k3, Yo, M, k1)x5, M, Yo, k3, Yo, M, k2. (39st)

R14 and 15 : *k*

R16 : k2, *p*, finish the row with k2.

R17 : *k*

R18 : k2, *p*, finish the row with k2.

R19 : k2, (M, Yo, k5, Yo, M, k1)x5, M, Yo, k5, Yo, M, k2. (51st)

R20 and 21: *k*

R22 :k2, *p*, finish the row with k2.

R23 : *k*

R24 :k2, *p*, finish the row with k2.

R25 : k2,(M, Yo, k7, Yo, M, k1)x5, M, Yo, k7, Yo, M, k2. (63st)

R26 : *k*

Lace section n°1 (to do with the written explanations or with the help of the diagram):

R27 : k2(M,k2, K2tog, Yo, k1, Yo, SKP, k2, M, k1)x5, M,k2, K2tog, Yo, k1,Yo, SKP,k2, M k2.

R28 : k2, (M,k9, M, p1)x5, M, k9, M, k2.

R29 : k2 (M, k1, K2tog, Yo, k3, Yo, SKP, k1, M, k1)x5, M, k1, K2tog, Yo, k3, Yo, SKP, k1, M, k2.

R30 : k2, (M, k9, M, p1)x5, M, k9, M, k2.

R31 : k2(M, k3, Yo, SK2P, Yo, k3, M, k1)x5, M, k3, Yo, SK2P, Yo, k3, M, k2.

R32 : k2, (M, k9, M, p1)x5, M, k9, M, k2.

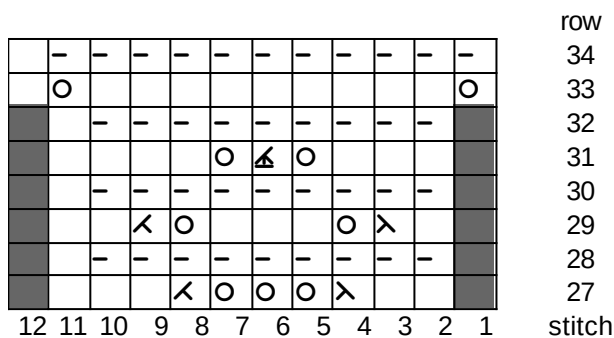
R33 : k2, (M, Yo, k9, Yo, M, k1)x5, M, Yo, k9, Yo, M, k2 (75st)





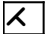
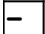

R34 : *k*

Diagram of lace section n ° 1:

This diagram shows the sections in parenthesis to be multiplied by 5.

Clarification on non-existent stitches in this diagram: I include increases in the lace sections, which enlarges them, so I have to predict their arrival... these non-existent stitches should therefore not be taken into account when knitting, until the arrival of the increases made with yarn over.



-  nonexistent stitch
-  K2tog
-  Yarn over
-  k on the right side
P on the wrong side
-  SKP
-  k on the wrong side
-  SK2P

Day 2 :

R35 and 37 (right side rows): *k*

R36 and 38 (wrong side rows) :k2, *p*, finish the row with k2.

R39 : k2, (M, Yo, k11, Yo, M, k1)x5, M, Yo, k11, Yo, M, k2. (87st)

R40, 41 and 43 : *k*

R42 and 44: k2, *p*, finish the row with k2.

R45 : k2, (M, Yo, k13, Yo, M, k1)x5, M, Yo, k13, Yo, M, k2. (99st)

R46, 47 and 49 : *k*

R48 and 50: k2, *p*, finish the row with k2.

R51 : k2, (M, Yo, k15, Yo, M, k1)x5, M, Yo, k15, Yo, M, k2. (111st)

R52, 53 and 55 : *k*

R54 and 56 : k2, *p*, finish the row with k2.

R57 : k2, (M, Yo, k17, Yo, M, k1)x5, M, Yo, k17, Yo, M, k2. (123st)

R58: *k*

Day 5 :

Lace section n ° 3 (to do with written explanations or with the help of the diagram):

R93 (right side row) : k2, (M, k1, K2tog, Yo, k1, Yo, SKP, k17, K2tog, Yo, k1, Yo, SKP, k1, M, k1)x5, M, k1, K2tog, Yo, k1, Yo, SKP, k17, K2tog, Yo, k1, Yo, SKP, k1, M, k2.

R94 : k2, (M, k29, M, p1)x5, M, k29, M, k2.

R95 : k2, (M, K2tog, Yo, k3, Yo, SKP, k5, K2tog, Yo, k1, Yo, SKP, k5, K2tog, Yo, k3, Yo, SKP, M, k1)x5, M, K2tog, Yo, k3, Yo, SKP, k5, K2tog, Yo, k1, Yo, SKP, k5, K2tog, Yo, k3, Yo, SKP, M, k2.

R96 : k2, (M, k29, M, p1)x5, M, k29, M, k2.

R97 : k2, (M, k2, Yo, SK2P, Yo, k6, K2tog, Yo, k3, Yo, SKP, k6, Yo, SK2P, Yo, k2, M, k1)x5, M, k2, Yo, SK2P, Yo, k6, K2tog, Yo, k3, Yo, SKP, k6, Yo, SK2P, Yo, k2, M, k2.

R98 : k2, (M, k29, M, p1)x5, M, k29, M, k2.

R99 : k2, (M, k9, K2tog, Yo, k1, Yo, SKP, Yo, SK2P, Yo, k1, Yo, SKP, k9, M, k1)x5, M, k9, K2tog, Yo, k1, Yo, SKP, Yo, SK2P, Yo, k1, Yo, SKP, k9, M, k2.

R100 : k2, (M, k29, M, p1)x5, M, k29, M, k2.

R101 : k2, (M, Yo, k2, Yo, SK2P, Yo, k3, K2tog, Yo, k3, Yo, SK2P, Yo, k3, Yo, SKP, k3, Yo, SK2P, Yo, k2, Yo, M, k1)x5, M, Yo, k2, Yo, SK2P, Yo, k3, K2tog, Yo, k3, Yo, SK2P, Yo, k3, Yo, SKP, k3, Yo, SK2P, Yo, k2, Yo, M, k2 (195st).

R102 : k2, (M, k31, M, p1)x5, M, k31, M, k2.

R103 : k2, (M, k2, SKP, Yo, k1, Yo, K2tog, k3, Yo, SKP, Yo, SK2P, Yo, k1, Yo, SKP, Yo, SK2P, Yo, k3, SKP, Yo, k1, Yo, K2tog, k2, M, k1)x5, M, k2, SKP, Yo, k1, Yo, K2tog, k3, Yo, SKP, Yo, SK2P, Yo, k1, Yo, SKP, Yo, SK2P, Yo, k3, SKP, Yo, k1, Yo, K2tog, k2, M, k2.

R104 : k2, (M, k31, M, p1)x5, M, k31, M, k2.

R105 : k2, (M, Yo, k11, Yo, SK2P, Yo, k3, Yo, SK2P, Yo, k11, Yo, M, k1)x5, M, Yo, k11, Yo, SK2P, Yo, k3, Yo, SK2P, Yo, k11, Yo, M, k2. (207st)

R106 : k2, (M, k33, M, p1)x5, M, k33, M, k2.

R107 : k2, (M, k3, K2tog, Yo, k1, Yo, SKP, k6, Yo, SKP, Yo, SK2P, Yo, k6, K2tog, Yo, k1, Yo, SKP, k3, M, k1)x5, M, k3, K2tog, Yo, k1, Yo, SKP, k6, Yo, SKP, Yo, SK2P, Yo, k6, K2tog, Yo, k1, Yo, SKP, k3, M, k2.

R108 : k2, (M, k33, M, p1)x5, M, k33, M, k2.

R109 : k2, (M, k2, K2tog, Yo, k3, Yo, SKP, k6, Yo, SK2P, Yo, k6, K2tog, Yo, k3, Yo, SKP, k2, M, k1)x5, M, k2, K2tog, Yo, k3, Yo, SKP, k6, Yo, SK2P, Yo, k6, K2tog, Yo, k3, Yo, SKP, k2, M, k2.

R110 : k2, (M, k33, M, p1)x5, M, k33, M, k2.

R111 : k2, (M, k4, Yo, SK2P, Yo, k19, Yo, SK2P, Yo, k4, M, k1)x5, M, k4, Yo, SK2P, Yo, k19, Yo, SK2P, Yo, k4, M, k2.

R112 : k2, (M, k33, M, p1)x5, M, k33, M, k2.

R141 : k2, (M, Yo, k3, K2tog, Yo, k1, Yo, SKP, Yo, SK2P, Yo, k1, Yo, SKP, k1, Yo, SK2P, Yo, k5, Yo, SK2P, Yo, k1, K2tog, Yo, k1, Yo, SKP, Yo, SK2P, Yo, k1, Yo, SKP, k3, Yo, M, k1)x5,M, Yo, k3, K2tog, Yo, k1, Yo, SKP, Yo, SK2P, Yo, k1, Yo, SKP, k1, Yo, SK2P, Yo, k5, Yo, SK2P, Yo, k1, K2tog, Yo, k1, Yo, SKP, Yo, SK2P, Yo, k1, Yo, SKP, k3, Yo, M, k2. (267st)

R142 : k2, (M, k43, M, p1)x5, M, k43, M, k2.

R143 : k2, (M, k3, MD, Yo, k3, Yo, SK2P, Yo, k3, Yo, SKP, k3, K2tog, Yo, k1, Yo, SKP, k3, K2tog, Yo, k3, Yo, SK2P, Yo, k3, Yo, SKP, k3, M, k1)x5,M, k3, MD, Yo, k3, Yo, SK2P, Yo, k3, Yo, SKP, k3, K2tog, Yo, k1, Yo, SKP, k3, K2tog, Yo, k3, Yo, SK2P, Yo, k3, Yo, SKP, k3, M, k2.

R144 :k2, (M, k43, M, p1)x5, M, k43, M, k2.

R145 : k2, (M, k4, (Yo, SKP, Yo, SK2P, Yo, k1)x2, k2, K2tog, Yo, k3, Yo, SKP, k3,(Yo, SKP, Yo, SK2P, Yo, k1)x2, k3, M, k1)x5,M, k4, (Yo, SKP, Yo, SK2P, Yo, k1)x2, k2, K2tog, Yo, k3, Yo, SKP, k3,(Yo, SKP, Yo, SK2P, Yo, k1)x2, k3, M, k2.

R146 :k2, (M, k43, M, p1)x5, M, k43, M, k2.

R147 : k2, (M, Yo, k5, Yo, SK2P, Yo, k3, Yo, SK2P, Yo, (k6, Yo, SK2P, Yo)x2, k3, Yo, SK2P, Yo, k5, Yo, M, k1)x5, M, Yo, k5, Yo, SK2P, Yo, k3, Yo, SK2P, Yo, (k6, Yo, SK2P, Yo)x2, k3, Yo, SK2P, Yo, k5, Yo, M, k2. (279st)

R148 : k2, (M, k45, M, p1)x5, M, k45, M, k2.

R149 : k2, (M, k1, K2tog, Yo, k1, Yo, SKP, k2, Yo, SKP, Yo, SK2P, Yo, k2, K2tog, Yo, k1, Yo, SKP, k5, K2tog, Yo, k1, Yo, SKP, k2, Yo, SKP, Yo, SK2P, Yo, k2, K2tog, Yo, k1, Yo,SKP, k1, M, k1)x5,M,k1, K2tog, Yo, k1, Yo, SKP, k2, Yo, SKP, Yo, SK2P, Yo, k2, K2tog, Yo, k1, Yo, SKP, k5, K2tog, Yo, k1, Yo, SKP, k2, Yo, SKP, Yo, SK2P, Yo, k2, K2tog, Yo, k1, Yo,SKP, k1, M, k2.

R150 :k2, (M, k45, M, p1)x5, M, k45, M, k2.

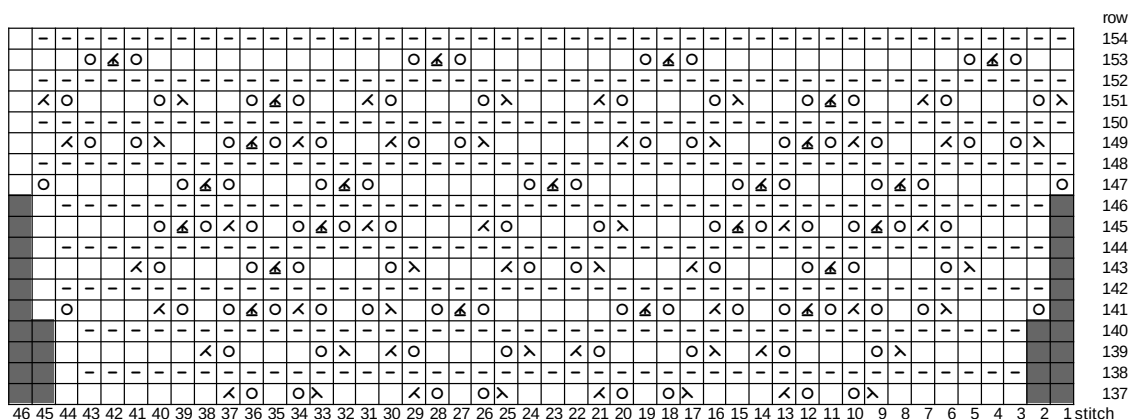
R151 : 2md, (M, MD, J, 3md, J, SS, 2md, J, SD, J, 2md, MD, J, 3md, J, SS, 3md, MD, J, 3md, J, SS, 2md, J, SD, J, 2md, MD, J, 3md, J, SS, M, 1md)x5,M, MD, J, 3md, J, SS, 2md, J, SD, J, 2md, MD, J, 3md, J, SS, 3md, MD, J, 3md, J, SS, 2md, J, SD, J, 2md, MD, J, 3md, J, SS, M, 2md.

R152 :k2, (M, k45, M, p1)x5, M, k45, M, k2.

R153 : k2, (M, k2, Yo, SK2P, Yo, k11, Yo, SK2P, Yo, k7, Yo, SK2P, Yo, k11, Yo, SK2P, Yo, k2, M, k1)x5,M, k2, Yo, SK2P, Yo, k11, Yo, SK2P, Yo, k7, Yo, SK2P, Yo, k11, Yo, SK2P, Yo, k2, M, k2.

R154 :k2, (M, k45, M, p1)x5, M, k45, M, k2.

Diagram of lace section n ° 4:



Day 9 :

R 155 and 156 : *k*

R157 : k2, (M, (Yo, k1)x3, k15, **2K2tog**, k1, **2K2tog**, k15, (k1, Yo)x3, M, k1)x5, M, (Yo, k1)x3, k15, **2K2tog**, k1, **2K2tog**, k15, (k1, Yo)x3, M, k2. (291st)

Attention in this row 157 it is well indicated in bold to do 2 times "knit 2 stitches together".

R158 : k2,*p*, finish the row with k2.

R159 : k2, (M, (Yo, k1)x2, k19, K2tog, k1, K2tog, k19, (k1, Yo)x2, M, k1)x5, M, (Yo, k1)x2, k19, K2tog, k1, K2tog, k19, (k1, Yo)x2, M, k2 (303st)

R160 : k2,*p*, finish the row with k2.

R161 : k2, (M, Yo, k49, Yo, M, k1)x5, M, Yo, k49, Yo, M, k2. (315m)

R162 :k2,*p*, finish the row with k2.

Days 10 and 11 :

To help you, I have accentuated the parts to repeat in parentheses with colors, especially where there are parentheses in the parentheses to give you visual clues.

R163 : k3, (k1, Yo, k1, SK2P, k1, Yo, k1)x6, k6, K2tog, Yo, k1, Yo, SKP, k6, ((k1, Yo, k1, SK2P, k1, Yo, k1)x5, k6, K2tog, Yo, k1, Yo, SKP, k6)x4, (k1, Yo, k1, SK2P, k1, Yo, k1)x6, k3.

Wrong side rows : 164, 166, 168, 170, 172, 174, 176, 178 : *k*.

R165: k3, (k2, Yo, SK2P, Yo, k2)x6, k5, K2tog, Yo, k3, Yo, SKP, k5, ((k2, Yo, SK2P, Yo, k2)x5, k5, K2tog, Yo, k3, Yo, SKP, k5)x4, (k2, Yo, SK2P, Yo, k2)x6, k3.

R167 : k3,(k1, Yo, k1, SK2P, k1, Yo, k1)x6, k3, K2tog, Yo, k1, Yo, SKP, Yo, SK2P, Yo, k1, Yo, SKP, k3, ((k1, Yo, k1, SK2P, k1, Yo, k1)x5, k3, K2tog, Yo, k1, Yo, SKP, Yo, SK2P, Yo, k1, Yo, SKP, k3)x4,(k1, Yo, k1, SK2P, k1, Yo, k1)x6, k3.

R169 : k3, (k2, Yo, SK2P, Yo, k2)x6, k2, K2tog, Yo, k3, Yo, SK2P, Yo, k3, Yo, SKP, k2, ((k2, Yo, SK2P, Yo, k2)x5, k2, K2tog, Yo, k3, Yo, SK2P, Yo, k3, Yo, SKP, k2,)x4,(k2, Yo, SK2P, Yo, k2)x6, k3.

R171 : k3,(k1, Yo, k1, SK2P, k1, Yo, k1)x6, k3, Yo, SKP, Yo, SK2P, Yo, k1, Yo, SKP, Yo, SK2P, Yo, k3, ((k1, Yo, k1, SK2P, k1, Yo, k1)x5,k3, Yo, SKP, Yo, SK2P, Yo, k1, Yo, SKP, Yo, SK2P, Yo, k3,)x4,(k1, Yo, k1, SK2P, k1, Yo, k1)x6, k3.

R173 : k3,(k2, Yo, SK2P, Yo, k2)x6, k4, Yo, SK2P, Yo, k3, Yo, SK2P, Yo, k4, ((k2, Yo, SK2P, Yo, k2)x5,k4, Yo, SK2P, Yo, k3, Yo, SK2P, Yo, k4,)x4,(k2, Yo, SK2P, Yo, k2)x6, k3.

R175 : k3,(k1, Yo, k1, SK2P, k1, Yo, k1)x6, k6, Yo, SKP, Yo, SK2P, Yo, k6, ((k1, Yo, k1, SK2P, k1, Yo, k1)x5,k6, Yo, SKP, Yo, SK2P, Yo, k6)x4, (k1, Yo, k1, SK2P, k1, Yo, k1)x6, k3.

R177 : k3,(k2, Yo, SK2P, Yo, k2)x6, k7, Yo, SK2P, Yo, k7, ((k2, Yo, SK2P, Yo, k2)x5,k7, Yo, SK2P, Yo, k7)x4, (k2, Yo, SK2P, Yo, k2)x6, k3.

Day 12 :

R179 : $k_3, (k_1, Y_0, k_1, SK2P, k_1, Y_0, k_1) \times 6, k_1, K2tog, Y_0, k_1, Y_0, SKP, k_5, K2tog, Y_0, k_1, Y_0, SKP, k_1, ((k_1, Y_0, k_1, SK2P, k_1, Y_0, k_1) \times 5, k_1, K2tog, Y_0, k_1, Y_0, SKP, k_5, K2tog, Y_0, k_1, Y_0, SKP, k_1) \times 4, (k_1, Y_0, k_1, SK2P, k_1, Y_0, k_1) \times 6, k_3.$

R 180, 182, 184, 186, 188, and 190 (wrong side rows) : * k^* .

R181 : $k_3, (k_2, Y_0, SK2P, Y_0, k_2) \times 6, K2tog, Y_0, k_3, Y_0, SKP, k_3, K2tog, Y_0, k_3, Y_0, SKP, ((k_2, Y_0, SK2P, Y_0, k_2) \times 5, K2tog, Y_0, k_3, Y_0, SKP, k_3, K2tog, Y_0, k_3, Y_0, SKP,) \times 4, (k_2, Y_0, SK2P, Y_0, k_2) \times 6, k_3.$

R183 : $k_3, (k_1, Y_0, k_1, SK2P, k_1, Y_0, k_1) \times 6, k_2, Y_0, SK2P, Y_0, k_1, K2tog, Y_0, k_1, Y_0, SKP, k_1, Y_0, SK2P, Y_0, k_2, ((k_1, Y_0, k_1, SK2P, k_1, Y_0, k_1) \times 5, k_2, Y_0, SK2P, Y_0, k_1, K2tog, Y_0, k_1, Y_0, SKP, k_1, Y_0, SK2P, Y_0, k_2,) \times 4, (k_1, Y_0, k_1, SK2P, k_1, Y_0, k_1) \times 6, k_3.$

R185 : $k_3, (k_2, Y_0, SK2P, Y_0, k_2) \times 6, k_5, K2tog, Y_0, k_3, Y_0, SKP, k_5, ((k_2, Y_0, SK2P, Y_0, k_2) \times 5, k_5, K2tog, Y_0, k_3, Y_0, SKP, k_5) \times 4, (k_2, Y_0, SK2P, Y_0, k_2) \times 6, k_3.$

R187 : $k_3, (k_1, Y_0, k_1, SK2P, k_1, Y_0, k_1) \times 6, k_7, Y_0, SK2P, Y_0, k_7, ((k_1, Y_0, k_1, SK2P, k_1, Y_0, k_1) \times 5, k_7, Y_0, SK2P, Y_0, k_7) \times 4, (k_1, Y_0, k_1, SK2P, k_1, Y_0, k_1) \times 6, k_3.$

R189 : $k_3, (k_2, Y_0, SK2P, Y_0, k_2) \times 6, (k_3, Y_0) \times 2, k_5, (Y_0, k_3) \times 2, ((k_2, Y_0, SK2P, Y_0, k_2) \times 5, (k_3, Y_0) \times 2, k_5, (Y_0, k_3) \times 2) \times 4, (k_2, Y_0, SK2P, Y_0, k_2) \times 6, k_3. (335st)$

Day 13 :

R191 : $k_3, (k_1, Y_0, k_1, SK2P, k_1, Y_0, k_1) \times 6, k_1, K2tog, Y_0, k_1, Y_0, SKP, k_9, K2tog, Y_0, k_1, Y_0, SKP, k_1, ((k_1, Y_0, k_1, SK2P, k_1, Y_0, k_1) \times 5, k_1, K2tog, Y_0, k_1, Y_0, SKP, k_9, K2tog, Y_0, k_1, Y_0, SKP, k_1) \times 4, (k_1, Y_0, k_1, SK2P, k_1, Y_0, k_1) \times 6, k_3.$

R192, 194, 196, 198, 200 and 202 : * k^* .

R193 : $k_3, (k_2, Y_0, SK2P, Y_0, k_2) \times 6, K2tog, Y_0, k_3, Y_0, SKP, k_1, K2tog, Y_0, k_1, Y_0, SKP, k_1, K2tog, Y_0, k_3, Y_0, SKP, ((k_2, Y_0, SK2P, Y_0, k_2) \times 5, K2tog, Y_0, k_3, Y_0, SKP, k_1, K2tog, Y_0, k_1, Y_0, SKP, k_1, K2tog, Y_0, k_3, Y_0, SKP) \times 4, (k_2, Y_0, SK2P, Y_0, k_2) \times 6, k_3.$

R195 : $k_3, (k_1, Y_0, k_1, SK2P, k_1, Y_0, k_1) \times 6, k_2, Y_0, SK2P, Y_0, k_2, K2tog, Y_0, k_3, Y_0, SKP, k_2, Y_0, SK2P, Y_0, k_2, ((k_1, Y_0, k_1, SK2P, k_1, Y_0, k_1) \times 5, k_2, Y_0, SK2P, Y_0, k_2, K2tog, Y_0, k_3, Y_0, SKP, k_2, Y_0, SK2P, Y_0, k_2) \times 4, (k_1, Y_0, k_1, SK2P, k_1, Y_0, k_1) \times 6, k_3.$

R197 : $k_3, (k_2, Y_0, SK2P, Y_0, k_2) \times 6, k_2, K2tog, Y_0, k_1, Y_0, SKP, k_2, Y_0, SK2P, Y_0, k_2, K2tog, Y_0, k_1, Y_0, SKP, k_2, ((k_2, Y_0, SK2P, Y_0, k_2) \times 5, k_2, K2tog, Y_0, k_1, Y_0, SKP, k_2, Y_0, SK2P, Y_0, k_2, K2tog, Y_0, k_1, Y_0, SKP, k_2) \times 4, (k_2, Y_0, SK2P, Y_0, k_2) \times 6, k_3.$

R199 : $k_3, (k_1, Y_0, k_1, SK2P, k_1, Y_0, k_1) \times 6, k_1, K2tog, Y_0, k_3, Y_0, SKP, k_5, K2tog, Y_0, k_3, Y_0, SKP, k_1, ((k_1, Y_0, k_1, SK2P, k_1, Y_0, k_1) \times 5, k_1, K2tog, Y_0, k_3, Y_0, SKP, k_5, K2tog, Y_0, k_3, Y_0, SKP, k_1) \times 4, (k_1, Y_0, k_1, SK2P, k_1, Y_0, k_1) \times 6, k_3.$

R201 : $k_3, (k_2, Y_0, SK2P, Y_0, k_2) \times 6, k_3, Y_0, SK2P, Y_0, k_9, Y_0, SK2P, Y_0, k_3, ((k_2, Y_0, SK2P, Y_0, k_2) \times 5, k_3, Y_0, SK2P, Y_0, k_9, Y_0, SK2P, Y_0, k_3) \times 4, (k_2, Y_0, SK2P, Y_0, k_2) \times 6, k_3.$

Day 14 :

Rows 203, 204, 205 and 206 : *k *

R207 : k2, *SKP, Yo *, finish the row with k3.

R 208, 209 and 210 : k2,*p*, finish the row with k2.

R211 : k2, *Yo, SKP*, finish the row with k3.

R 212, 213 and 214 : k2,*p*, finish the row with k2.

Row 215 : bind off. Several options are possible :

1- simple bind off: bind off all the stitches very loosely (or by taking a needle size larger by 1 or 2mm), by knitting them .

2- beadwork: bind off all the stitches very loosely (or by taking a needle size larger by 1 or 2mm), by knitting them with beads at regular intervals (every 7 to 10 stitches for example). This type of binding off remains very simple, but gives a light "ballast" to your work by improving its fall.

3- Bind off with i-cord: (this type takes more yarn than a simple one)

- Knit the first 2 stitches, bind the first stitch over the second.

- Put back the stitch obtained on the left needle.

- Knit the stitch a first time, put it back on the left needle.

- Knit the stitch a second time, then put it back on the left needle.

- Knit the stitch a third time and leave the stitch on the right needle.

- Knit the next two stitches together.

- Replace the two stitches you have on the right on the left needle.

- Knit these two stitches together.

- Repeat the same thing from the step in red to a stitch before the end of the row. When there is only one stitch left at the end of the row, knit and cast off your right needle stitch on it. Close your stitch.

This type of binding off can also be done with the hook, for those who practice.

Note, you can make more stitches in your i-cord, this will make a more pronounced loop. Bring in your threads, wash, block, cut the threads short.... congratulations, you're at the end !!!!!!!!!!!!!!!!!!!!!!!!!!!!!

