

La Wivre

Material:

1 skein of wool and silk 6 Karat Schoppel Wolle.

Needles 4mm

Stitch markers

Cable needle

Bloking kit or pins.

Points and abbreviations:

st : stitch

k : knit

p : purl

SK2P : slip, knit 2 together , pass over

SKP : slip, knit, pass over

SSK : slip, slip, knit : slip next 2 stitches knitwise, one at a time, to right hand needle. Insert tip of left needle into fronts of these stitches from left to right. Knit them together.

K3togK4togPo : knit 3 together , knit 4 together , bind of the first stitch on the second one.

m1R : make 1 to the right

m1L : make one to the left.

Yo : Yarn over

R : row

T : cable over 8 stitches, put 4 stitches on the cable needle placed behind the work, knit the next 4 stitches, pick up the remaining 4 stitches and knit them.

(...)x... : Knit the pattern in parentheses as many times as is indicated after the x.

[...]x... : Knit the pattern in square brackets as many times as is indicated after the x.



Pattern Camille Delahaie- les aiguilles de camille.com

*Any commercial use of this pattern and its achievements are prohibited,
unless prior written consent of the author.*

Work :

Cast on 86 stitches. Do 4 rows in knitting every stitches.

First Part :

R1 (right side row) : k11, (Yo, k4, Yo, k8)x6, k3. (98st)

R2 (wrong side row) and every wrong side rows : 3k, purl all the stitches and finish the row with k3.

R3 : k11, (Yo, k6, Yo, k8)x6, k3. (110st)

R5 : k11, (Yo, SSK, k1, m1L, k2, m1R, k1, SKP, Yo, k8)x6, k3. (122st)

R7 : k3, T, (Yo, SSK, k6, SKP, Yo, T)x6, k3. (122st)

R9 : k11, (Yo, SSK, k2, m1L, k2, m1R, k2, SKP, Yo, k8)x6, k3. (134st)

R11 : k11, (Yo, SSK, k8, SKP, Yo, T)x6, k3. (134st)

R13 : k11, (Yo, SSK, k3, m1L, k2, m1R, k3, SKP, Yo, k8)x6, k3. (146st)

R15 : k3, T, (Yo, SSK, k10, SKP, Yo, T)x6, k3. (146st)

R17 : k11, (Yo, SSK, k4, m1L, k2, m1R, k4, SKP, Yo, k8)x6, k3. (158st)

R19 : k11, (Yo, SSK, k12, SKP, Yo, T)x6, k3. (158st)

R21 : k11, (Yo, SSK, k5, m1L, k2, m1R, k5, SKP, J, k8)x6, k3. (170st)

R23 : k3, T, (Yo, SSK, k14, SKP, Yo, T)x6, k3. (170st)

R25 : k11, (Yo, SSK, k6, m1L, k2, m1R, k6, SKP, Yo, k8)x6, k3. (182st)

R27 : k11, (Yo, SSK, k16, SKP, Yo, T)x6, k3. (182st)

R29 : k11, (Yo, SSK, k7, m1L, k2, m1R, k7, SKP, Yo, k8)x6, k3. (194st)

R31 : k3, T, (Yo, SSK, k18, SKP, Yo, T)x6, k3. (194st)

R33 : k11, (Yo, SSK, k8, m1L, k2, m1R, k8, SKP, Yo, k8)x6, k3. (206st)

R35 : k11, (Yo, SSK, k20, SSD, Yo, T)x6, k3. (206st)

R37 : k11, (Yo, SSK, k9, m1L, k2, m1R, k9, SKP, Yo, k8)x6, k3. (218st)

R39 : k3, T, (Yo, SSK, k22, SSD, Yo, T)x6, k3. (218st)

R41 : k11, (Yo, SSK, k10, m1L, k2, m1R, k10, SKP, Yo, k8)x6, k3. (230st)

R43 : k11, (Yo, SSK, k24, SSD, Yo, T)x6, k3. (230st)

R45 : k11, (Yo, SSK, k11, m1L, k2, m1R, k11, SKP, Yo, k8)x6, k3. (242st)

R47 : k3, T, (Yo, SSK, k26, SSD, Yo, T)x6, k3. (242st)

R49 : k11, (Yo, SSK, k12, m1L, k2, m1R, k12, SKP, Yo, k8)x6, k3. (254st)

Second Part :

R51 : k11, [(Yo, SSK)x2, k11, m1L, k2, m1R, k11, (SKP, Yo)x2, k8]x6, k3. (266st)

R53 : k11, [(Yo, SSK)x3, k10, m1L, k2, m1R, k10, (SKP, Yo)x3, k8]x6, k3. (278st)

R55 : k3, T, [(Yo, SSK)x4, k20, (SKP, Yo)x4, T]x6, k3. (278st)

R57 : k11, [(Yo, SSK)x5, k7, m1L, k2, m1R, k7, (SKP, Yo)x5, k8]x6, k3. (290st)

R59 : k11, [(Yo, SSK)x6, k6, m1L, k2, m1R, k6, (SKP, Yo)x6, k8]x6, k3. (302st)

R61 : k11, [(Yo, SSK)x7, k5, m1L, k2, m1R, k5, (SKP, Yo)x6, k8]x6, k3. (314st)

R63 : k3, T, [(Yo, SSK)x8, k10, (SKP, Yo)x8, T]x6, k3. (314st)

R65 : k11,[(Yo, SSK)x9, k2,m1L,k2,m1R, k2,(SKP, Yo)x9, k8]x6, k3. (326st)
R67 : k11,[(Yo, SSK)x10, k1, m1L, k2, m1R, k1,(SKP, Yo)x10, k8]x6, k3. (338st)
R69 : k11,[(Yo, SSK)x12, Yo,(SKP, Yo)x11,k8]x6, k3. (344st)

Third Part:

R71 : k3, T,[(Yo, SSK)x11, (Yo, k1)x3, Yo, (SKP, Yo)x11, T]x6, k3. (368st)
R73 : k11, [(Yo, SSK)x12, (Yo, k1)x3, Yo, (SKP, Yo)x12, k8]x6, k3. (392st)
R75 : k11, [(Yo, SSK)x13, Yo,SD, Yo, (SKP, Yo)x13, k8]x6, k3. (392st)
R77: k11, [(Yo, SSK)x13,(Yo, k1)x3, Yo,(SKP, Yo)x13, k8]x6, k3. (416st)
R79 : k3, T,[(Yo, SSK)x14, Yo,SK2P, Yo,(SKP, Yo)x14, T]x6, k3. (416st)
R81 : k11, [(Yo, SSK)x14, (Yo, k1)x3, Yo, (SKP, Yo)x14, k8]x6, k3. (440st)
R83 : k11, [(Yo, SSK)x15, (Yo, k1)x3, Yo, (SKP, Yo)x15,k8]x6, k3. (464st)

Fourth Part :

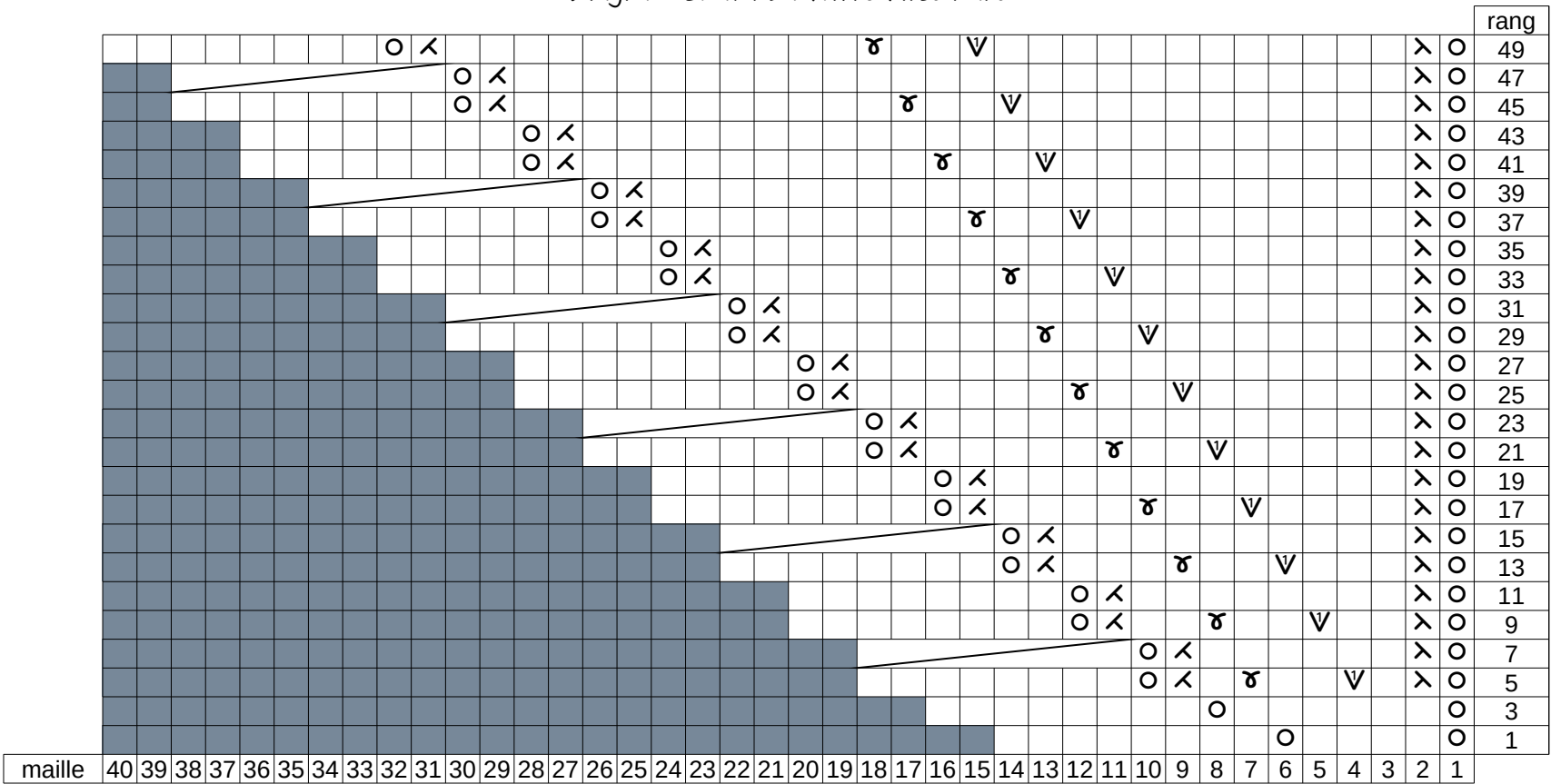
R85 : k6, m1L, SSK, m1R, k3,[(Yo,SSK)x15, k3, Yo, k1, Yo, k3, (SKP, Yo)x15, k3, m1L, SSK, m1R, k3]x6, k3. (483st)
R87 : k7, m1L, k1, m1R, k4,[(Yo,SSK)x15, k4,Yo, k1,Yo, k4,(SSK,Yo)x15, k4, m1L, k1, m1R, k4]x6, k3. (509st)
R89 : k8, m1L, k1, m1R, k5,[(Yo,SSK)x15, k5, Yo, k1, Yo, k5, (SSK,Yo)x15, k5, m1L, k1, m1R, k5]x6, k3. (535st)
R91 :k7, SSK, k1, SKP, k4,[(Yo,SSK)x15,k4,SSK,k1,SKP,k4,(SKP,Yo)x15,k4,SSG,k1,SSD, k4]x6, k3. (509st)
R93 : k14, [(Yo,SSK)x15, k11, (SKP,Yo)x15, k11]x6, k3. (509st)
R95 :k6, SSK k1, SKP, k3,[(Yo,SSK)x15, k3,SSK, k1,SKP, k3, (SKP,Yo)x15, k3,SSK k1, SKP, k3]x6, k3. (483st)
R97 : k3, SSK, k1, SK2P, k1, SKP, [(Yo,SSK)x15, SSK, k1, SK2P, k1, SKP,(SKP,Yo)x15, SSK, k1, SK2P, k1, SKP,]x6, k3. (431st)
R99 : k4, SK2P, k1, [(Yo,SSK)x15, k1, SK2P, k1,(SKP,Yo)x15, k1, SK2P, k1]x6, k3.(405st)
R101 : k3, SK2P, [(Yo,SSK)x14, Yo, K3togK4togPo, Yo,(SKP,Yo)x14, SK2P]x6, k3. (367st).

Make row 102 like the previous wrong side rows.

Bind off : For this flexible bind off, knit the first and second stitches, binf off the first on the second. Then put this stitch back on the left-hand needle and repeat this operation till the end of the row. If you want, you can do long picots at the top of the twists.

Blocking: this shawl must be stretched to give its maximum, first pin the top, then the central twist and then distribute the pins according to the pointed part that are naturally appear. It will almost have the shape of a circle.

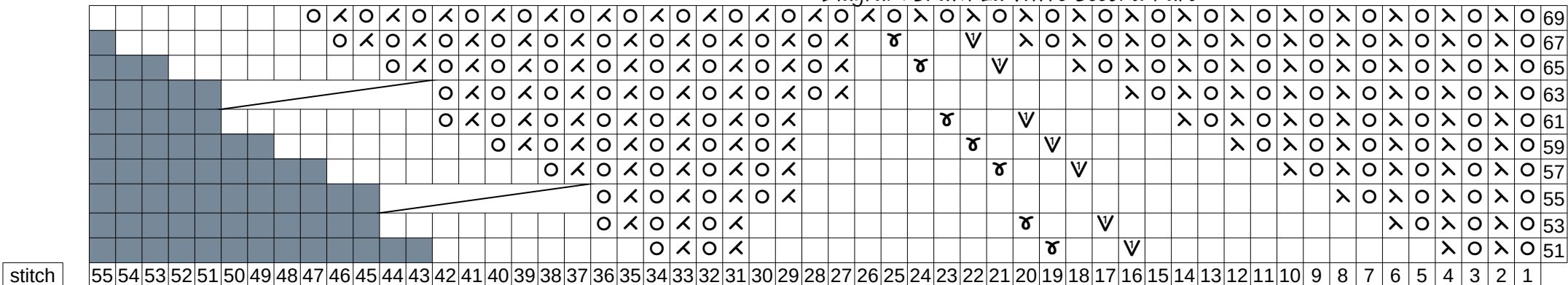
Diagram Shawl La Wivre First Part



- knit on the right side row
- Yarn over
- X SSK
- < SKP
- V m1L
- r m1R
- nonexistent stitch

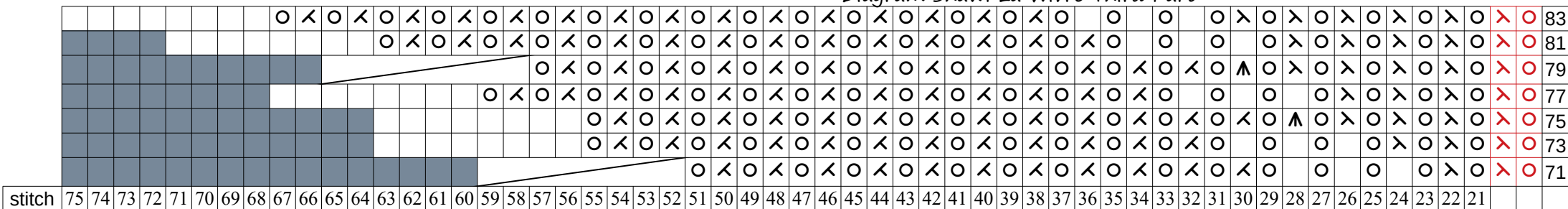
T : Cable on 8 stitches to the right

Diagram Shawl La Wivre Second Part



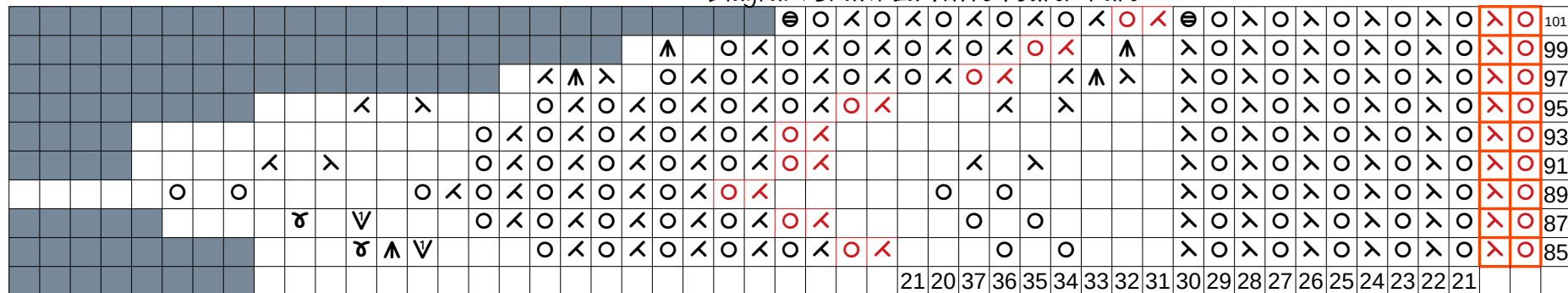
▲ SK2P

Diagram Shawl La Wivre Third Part



⌘ **○** Repeat this pattern 10 times and continue according to the diagram

Diagram Shawl La Wivre Fourth Part



⌘ **⋄** Repeat this pattern 10 times and continue according to the diagram

⊖ k3togk4togPo