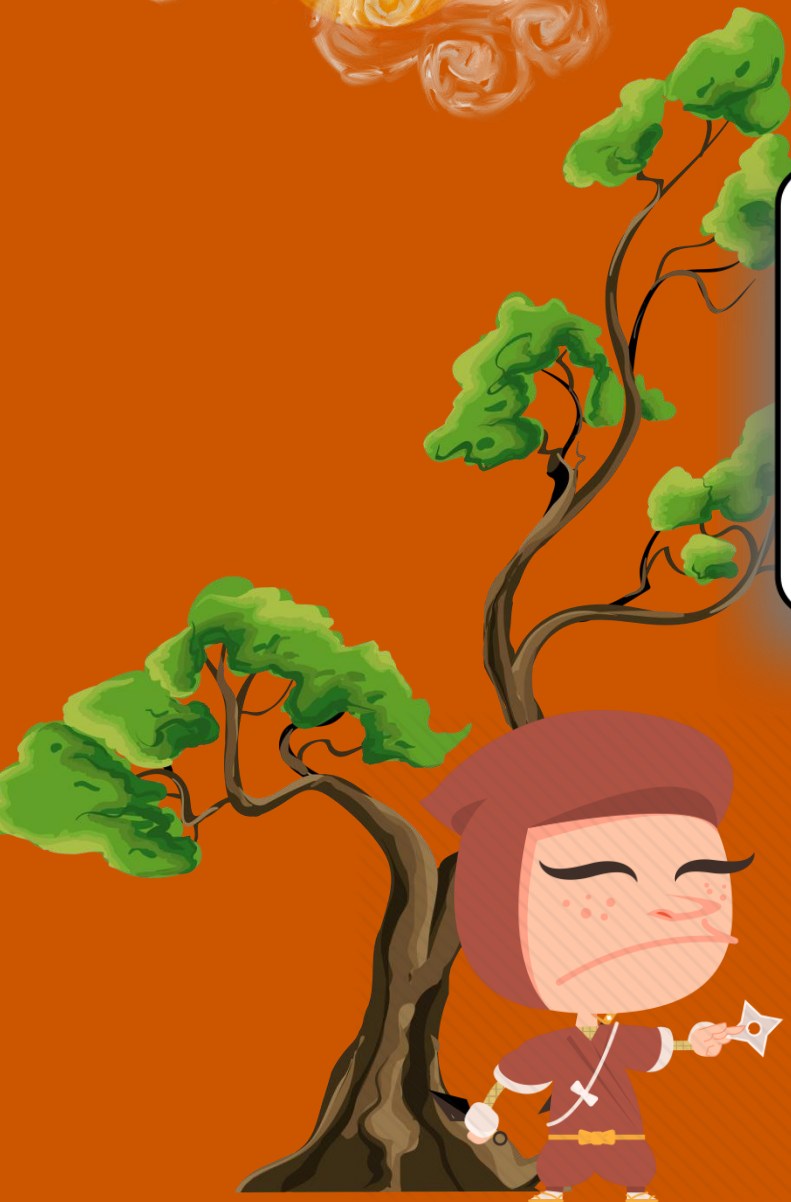





CALCUL MENTAL



# DUEL ET MÉMOIRE

4



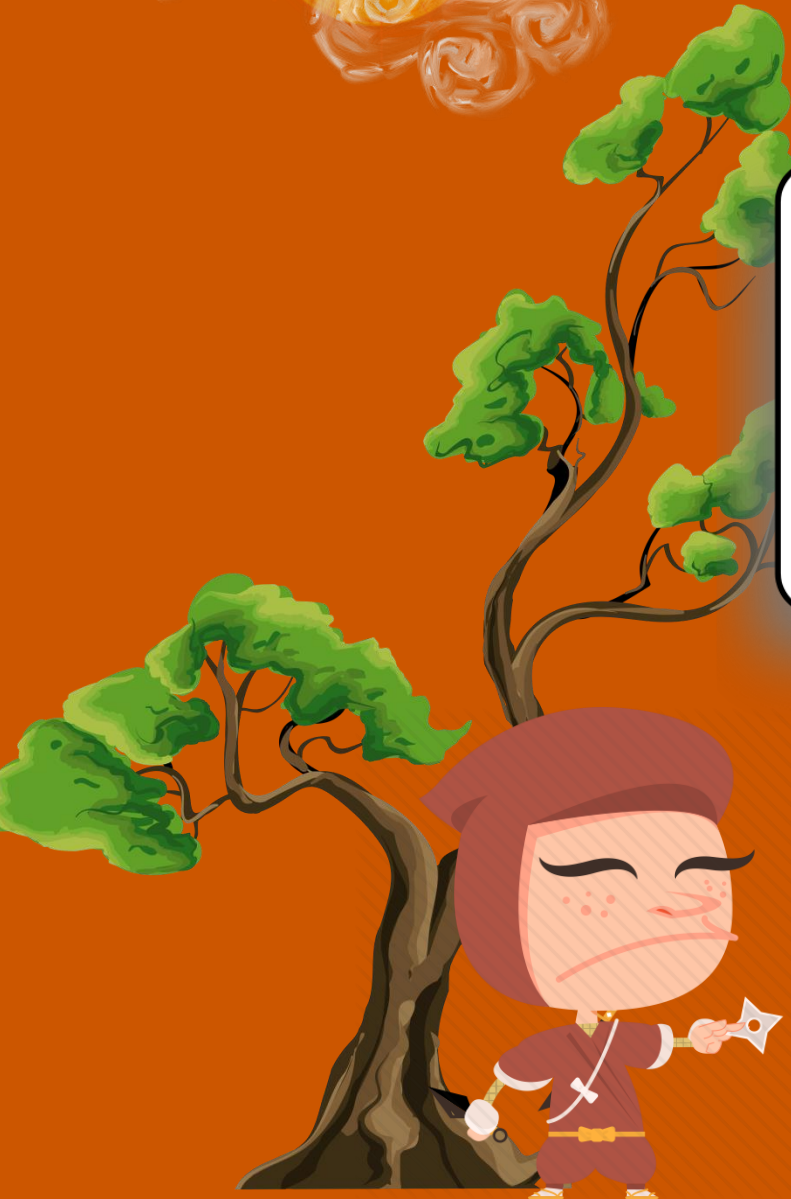
The background is a solid orange color. In the top left, there is a bright yellow sun partially obscured by stylized, swirling white and orange clouds. To the right, there are more stylized white and orange clouds. A dark brown tree with green foliage is positioned on the left side. In the center, a white speech bubble with a black border contains the text. Below the speech bubble, a small black colon is visible. In the bottom left, a character with a brown hood and a sad expression is shown. In the bottom right, a character with a black mask and a white forehead plate is shown.

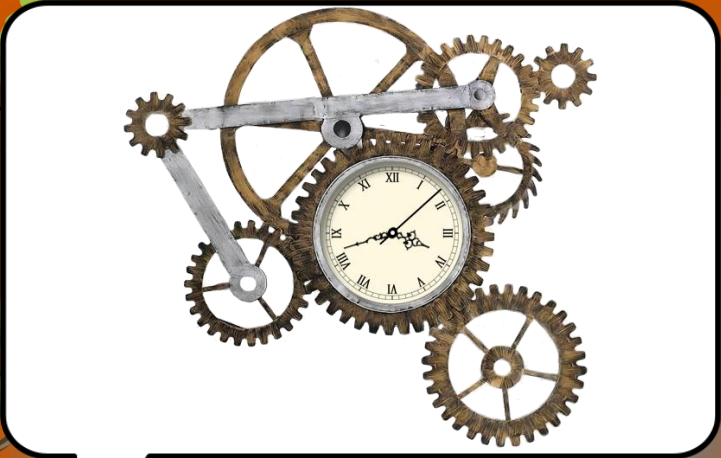
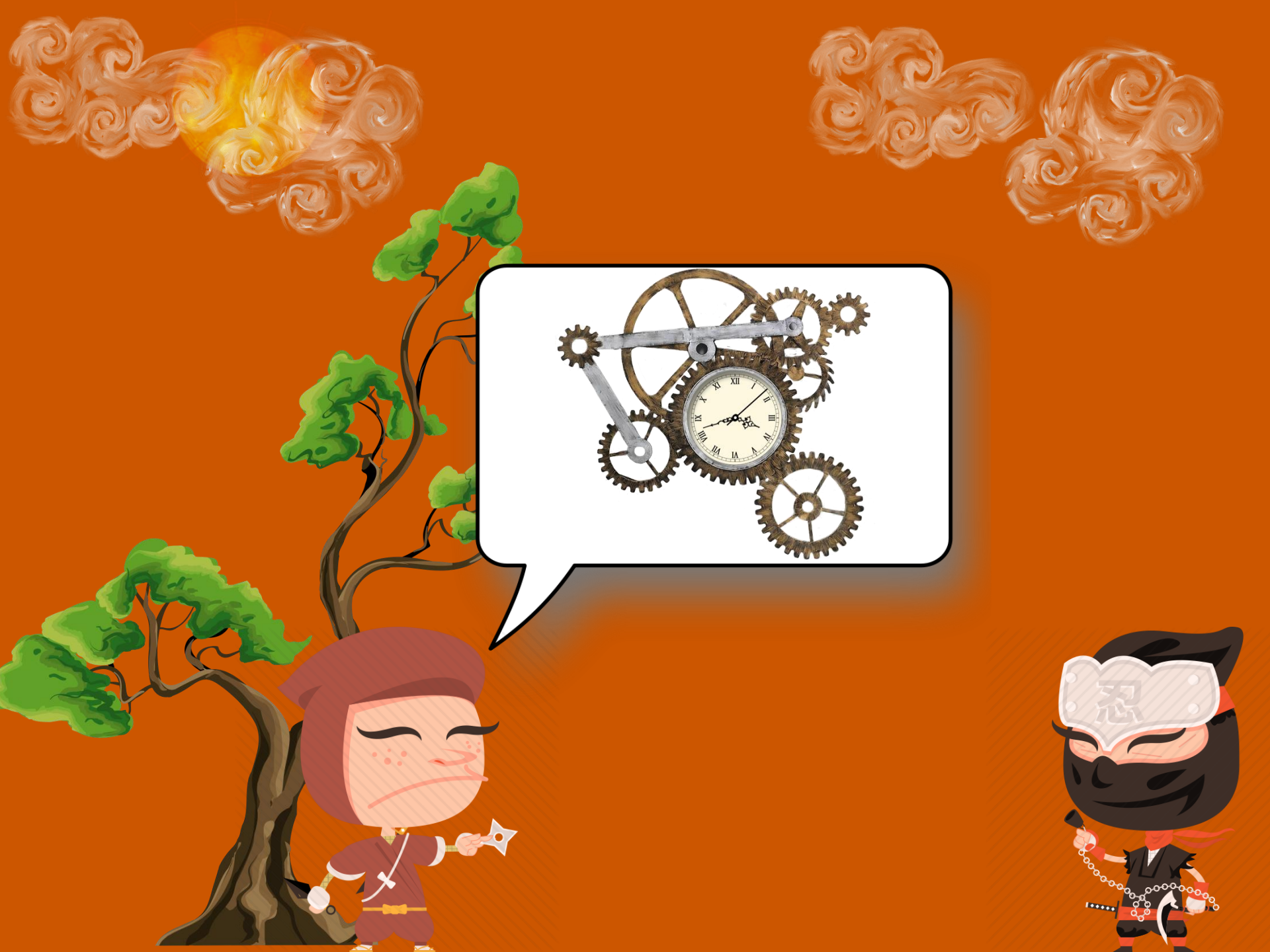
**MÉMORISE LES  
NOMBRES SUIVANTS**

:



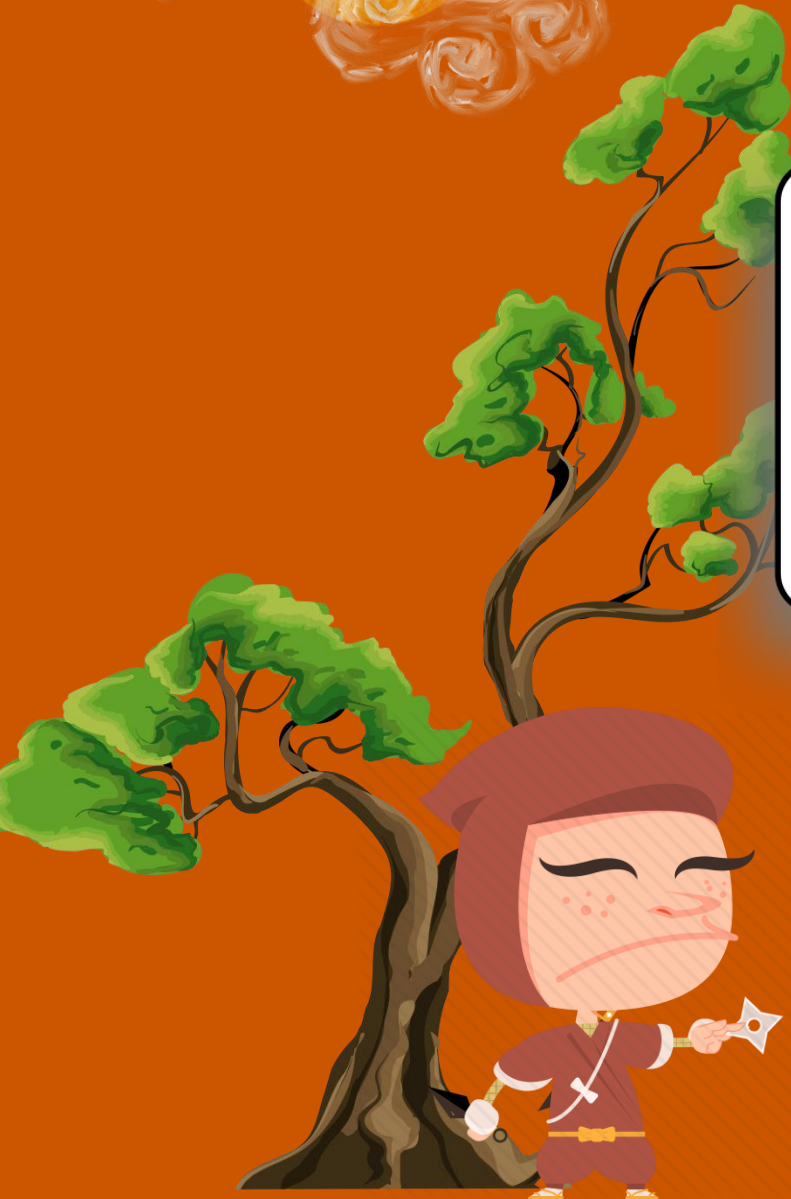
33 - 201 - 47







RANGE LES NOMBRES EN  
ORDRE DÉCROISSANT...





33 - 201 - 47

201 - 47 - 33

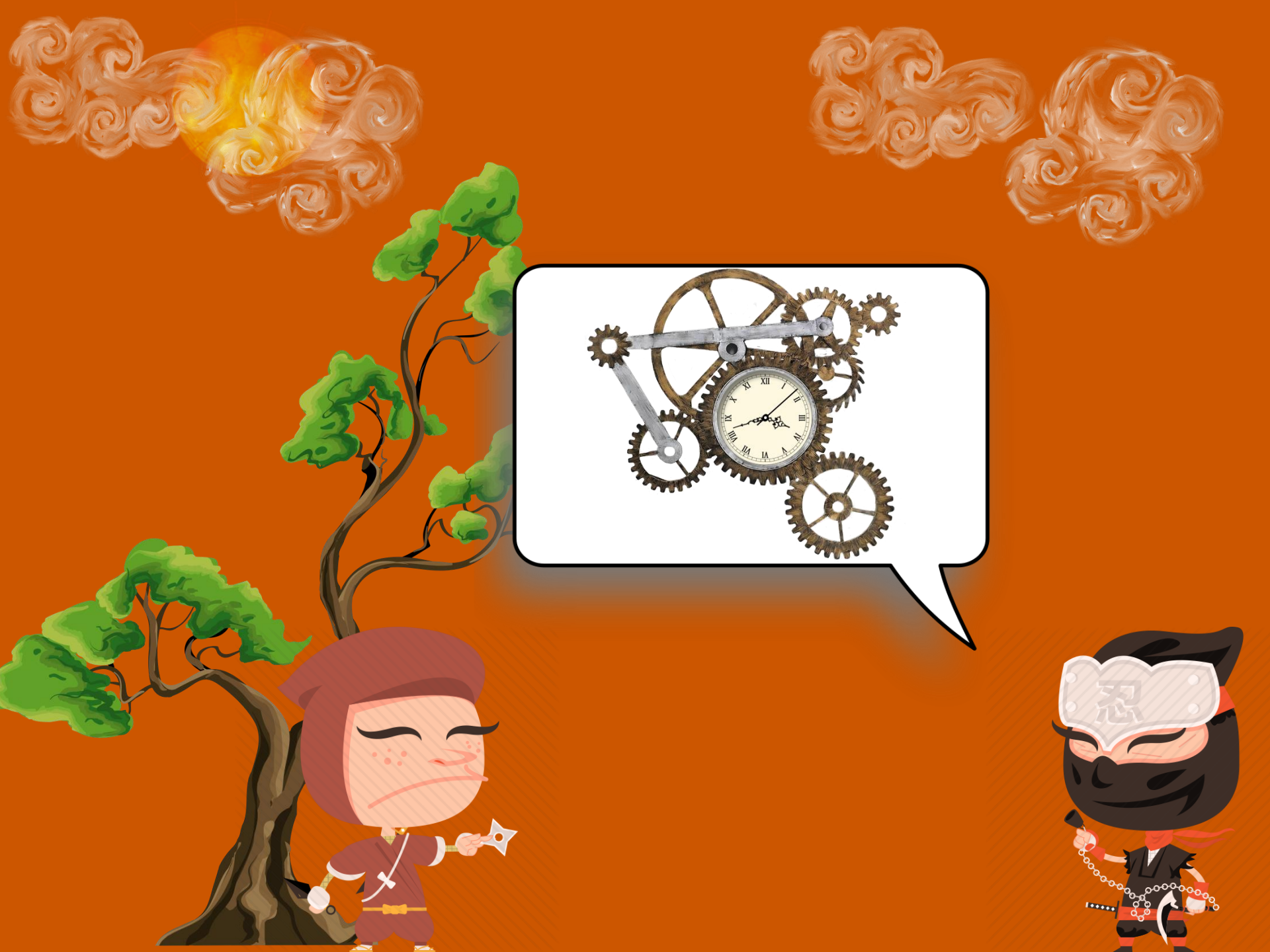


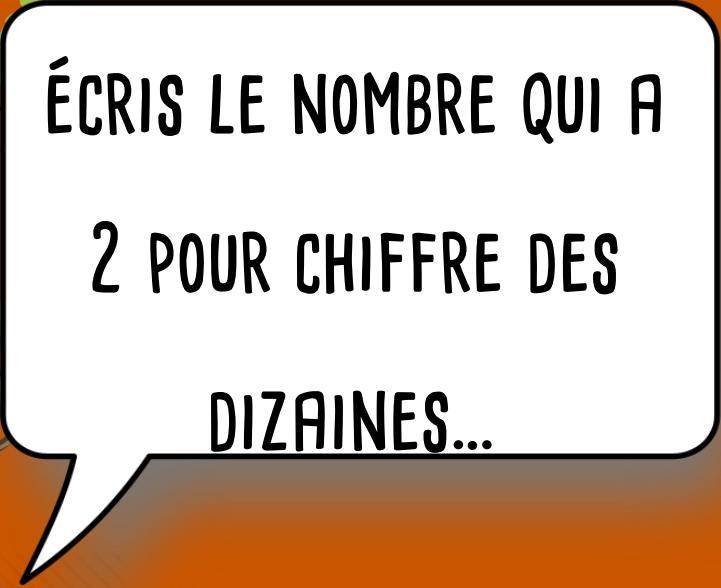


325 - 204 - 872









ÉCRIS LE NOMBRE QUI A  
2 POUR CHIFFRE DES  
DIZAINES...



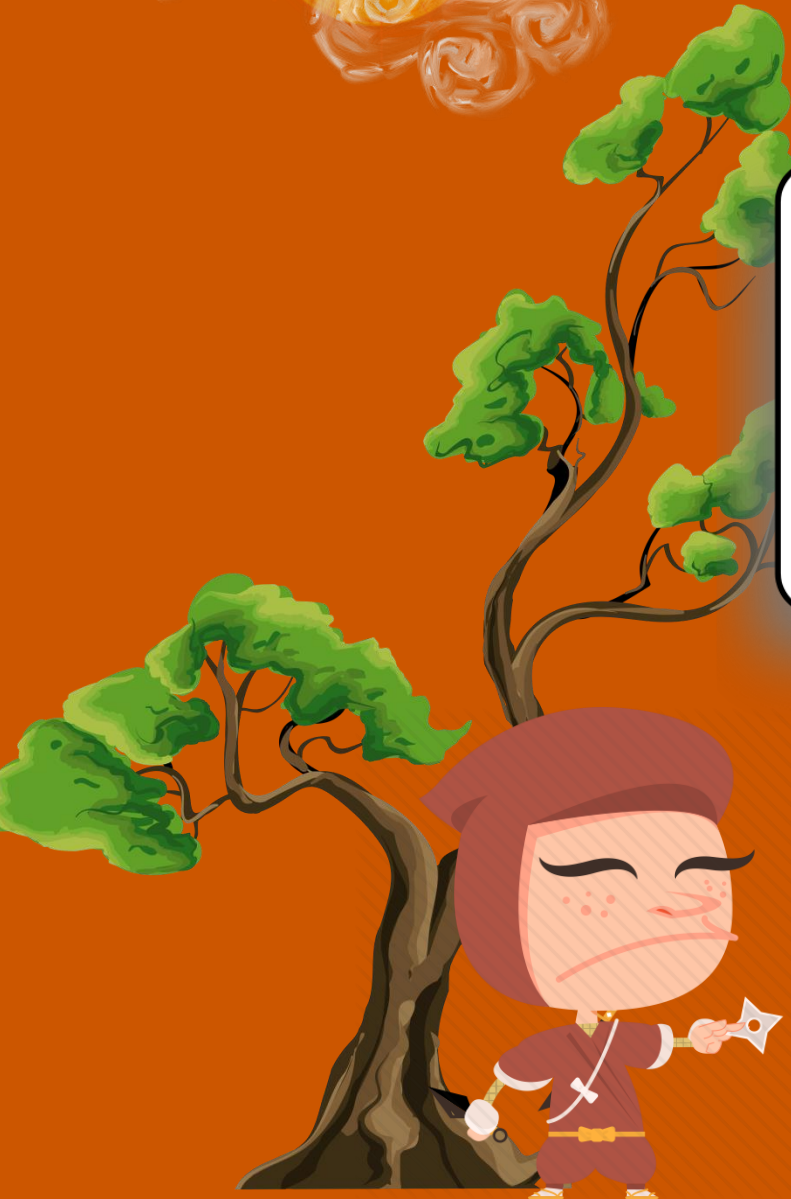
The background is a solid orange color. In the top left, there is a bright yellow sun partially obscured by stylized, swirling white and orange clouds. To the right, there are more stylized white and orange clouds. A dark brown tree with green foliage is on the left side. In the center, a white speech bubble with a black border contains the text. At the bottom left, a character with a purple hood and a sad expression is holding a small white object. At the bottom right, a character with a black mask and a white forehead plate with the Japanese character '忍' (Nin) is holding a chain and a sword.

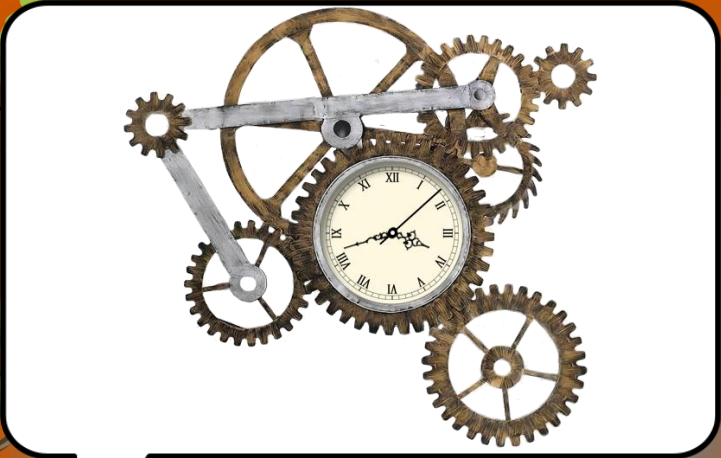
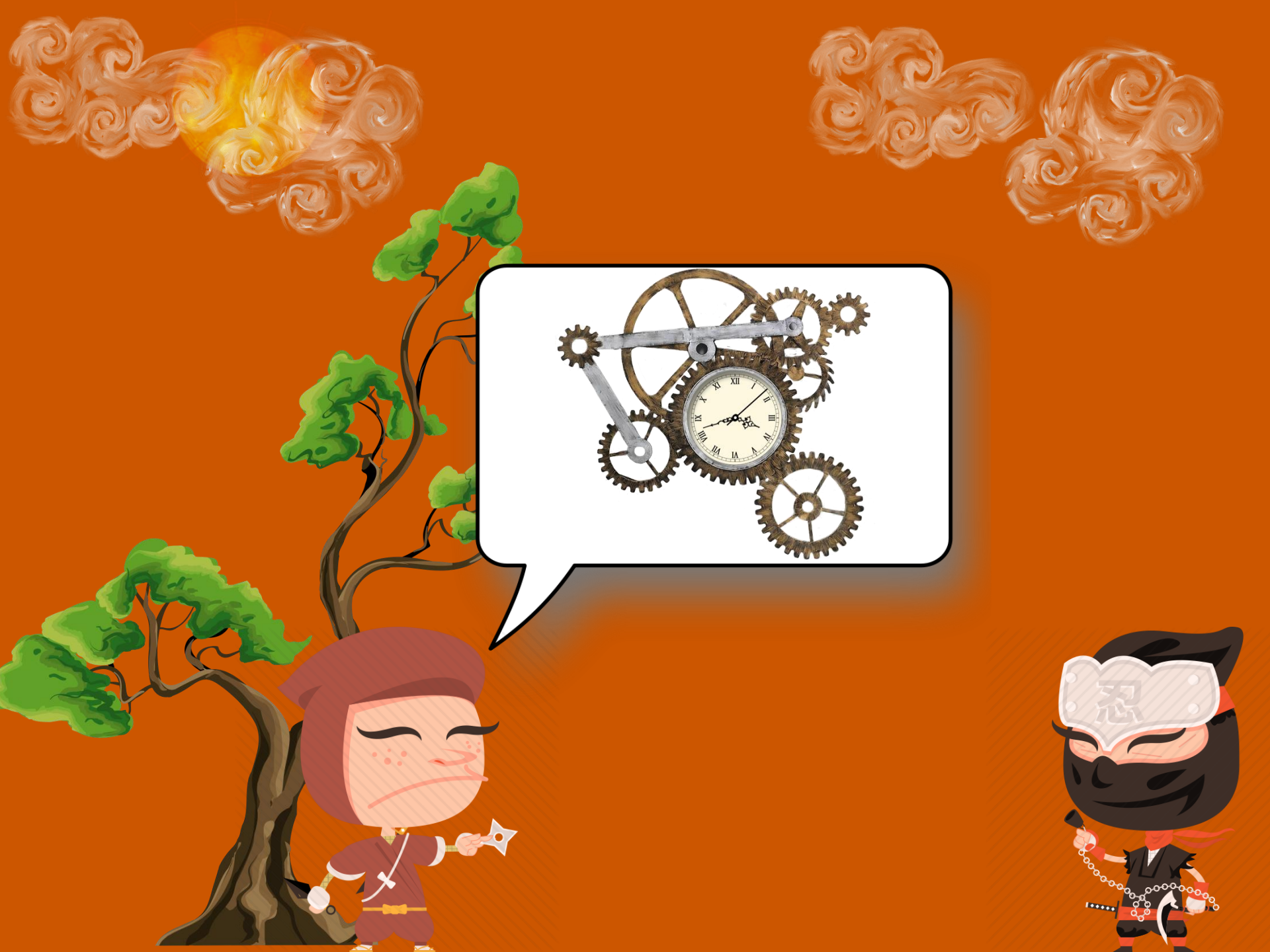
325 - 204 - 872


325



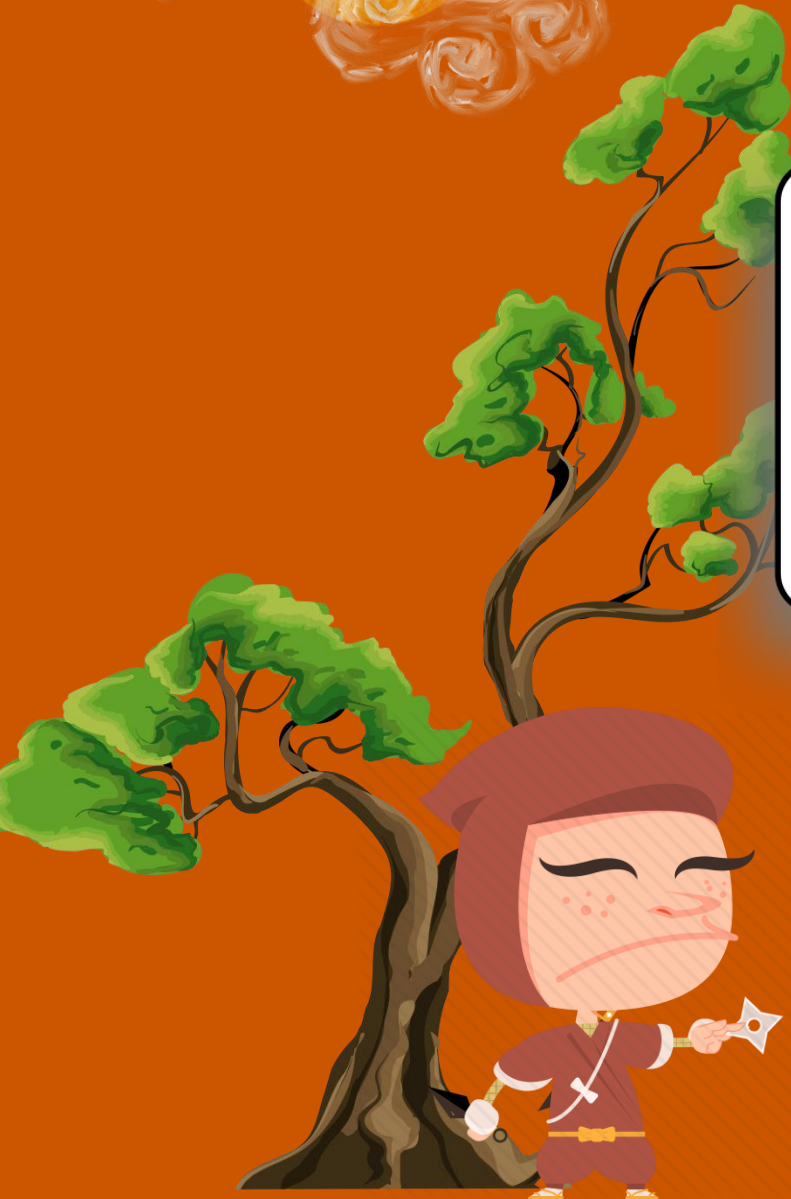
8 - 10 - 5







ÉCRIS LE PRODUIT  
DES 3 NOMBRES...




$$8 - 10 - 5$$

$$8 \times 5 \times 10 = 400$$

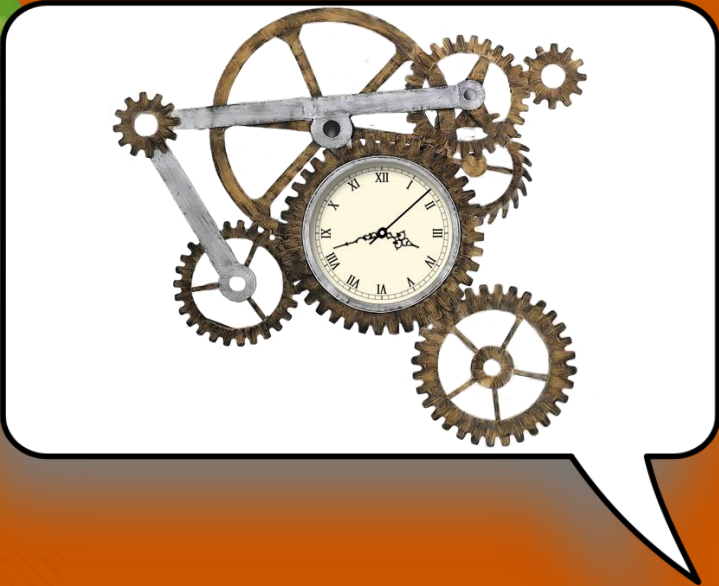
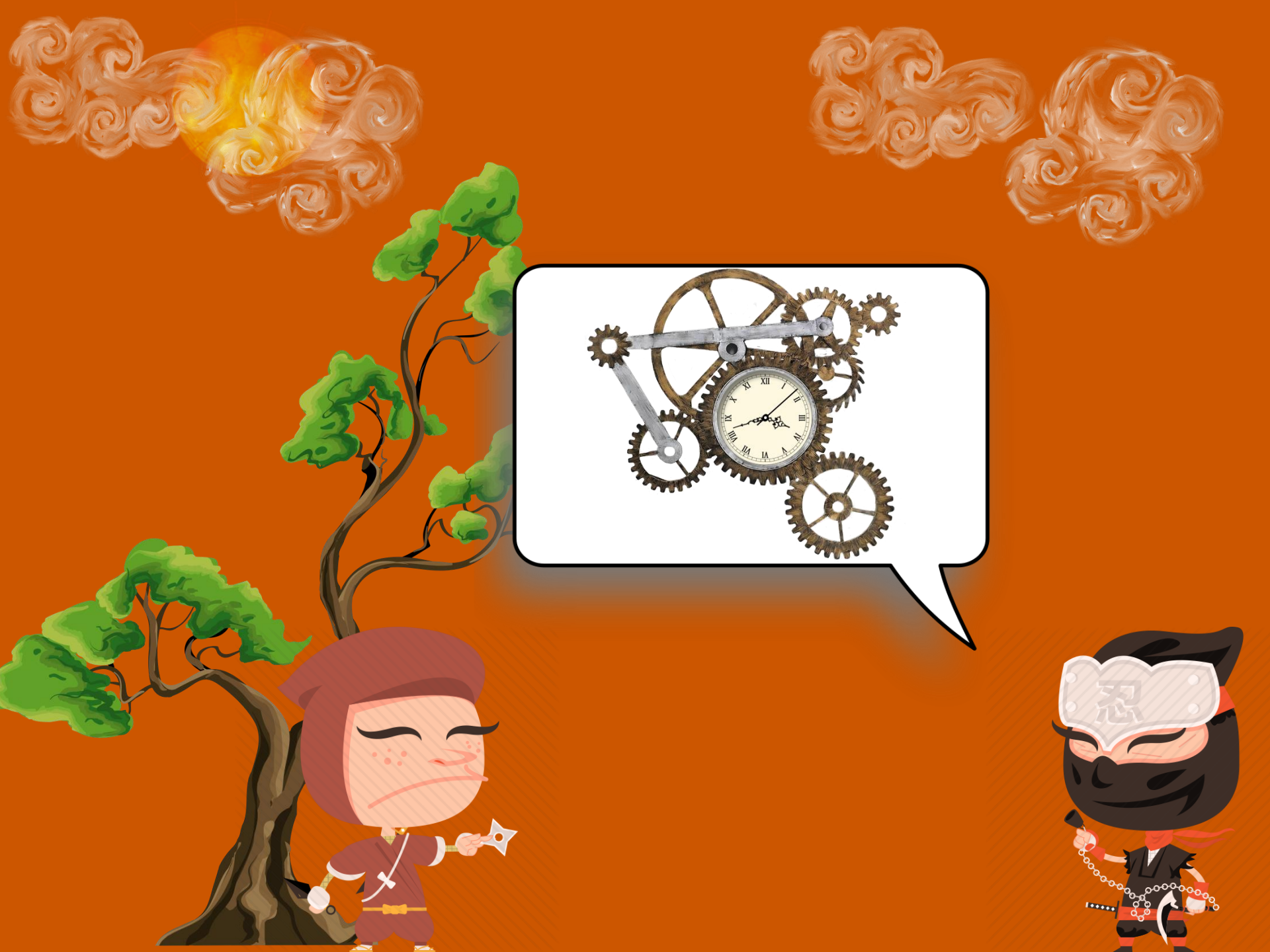





52 - 69 - 83









DONNE LA DIFFÉRENCE  
ENTRE LE PLUS GRAND ET  
LE PLUS PETIT NOMBRE..






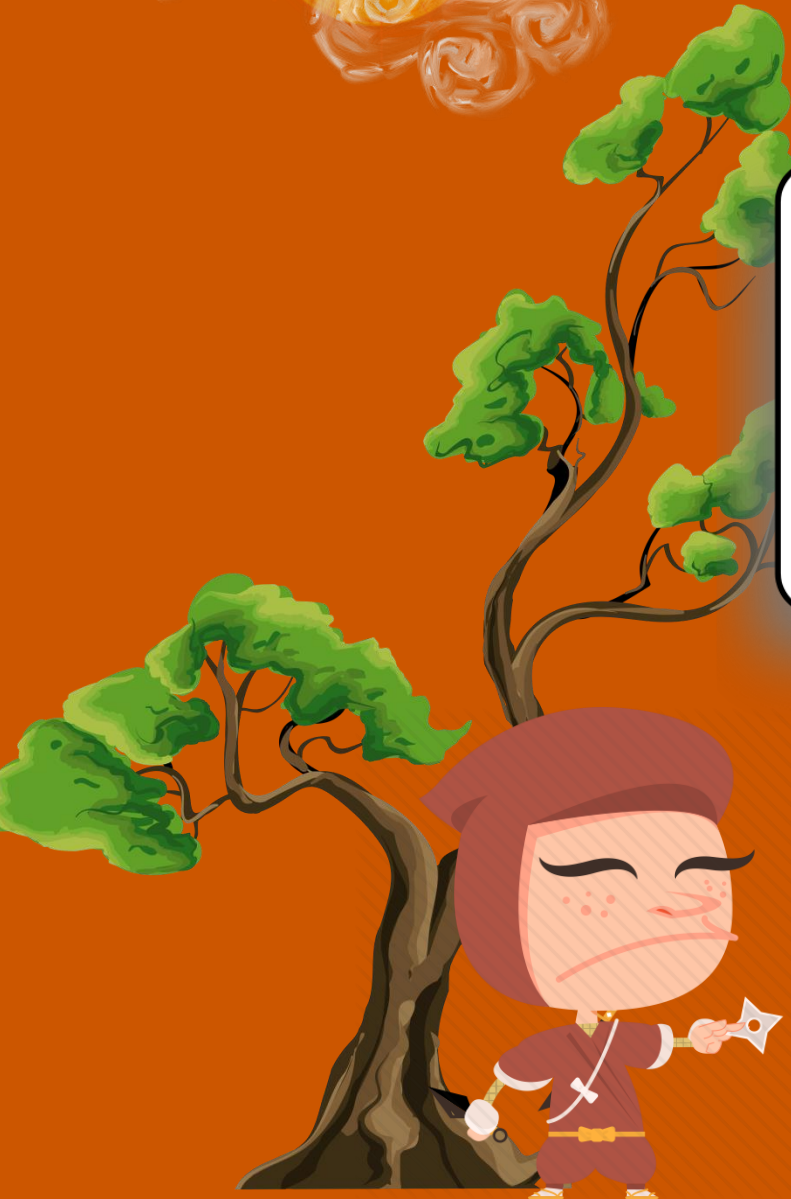
52 - 69 - 83

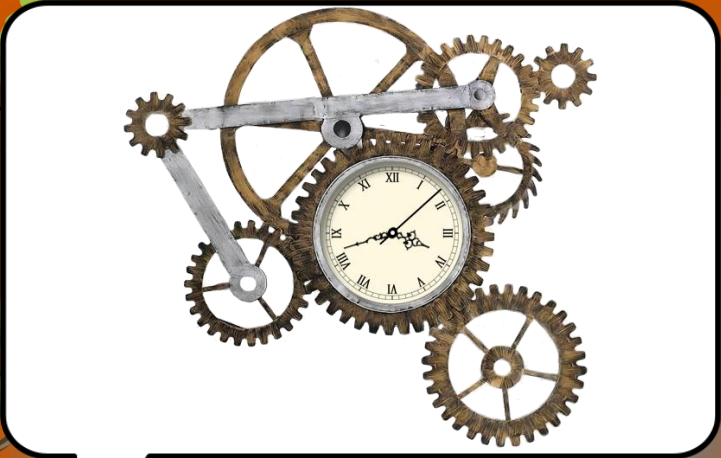
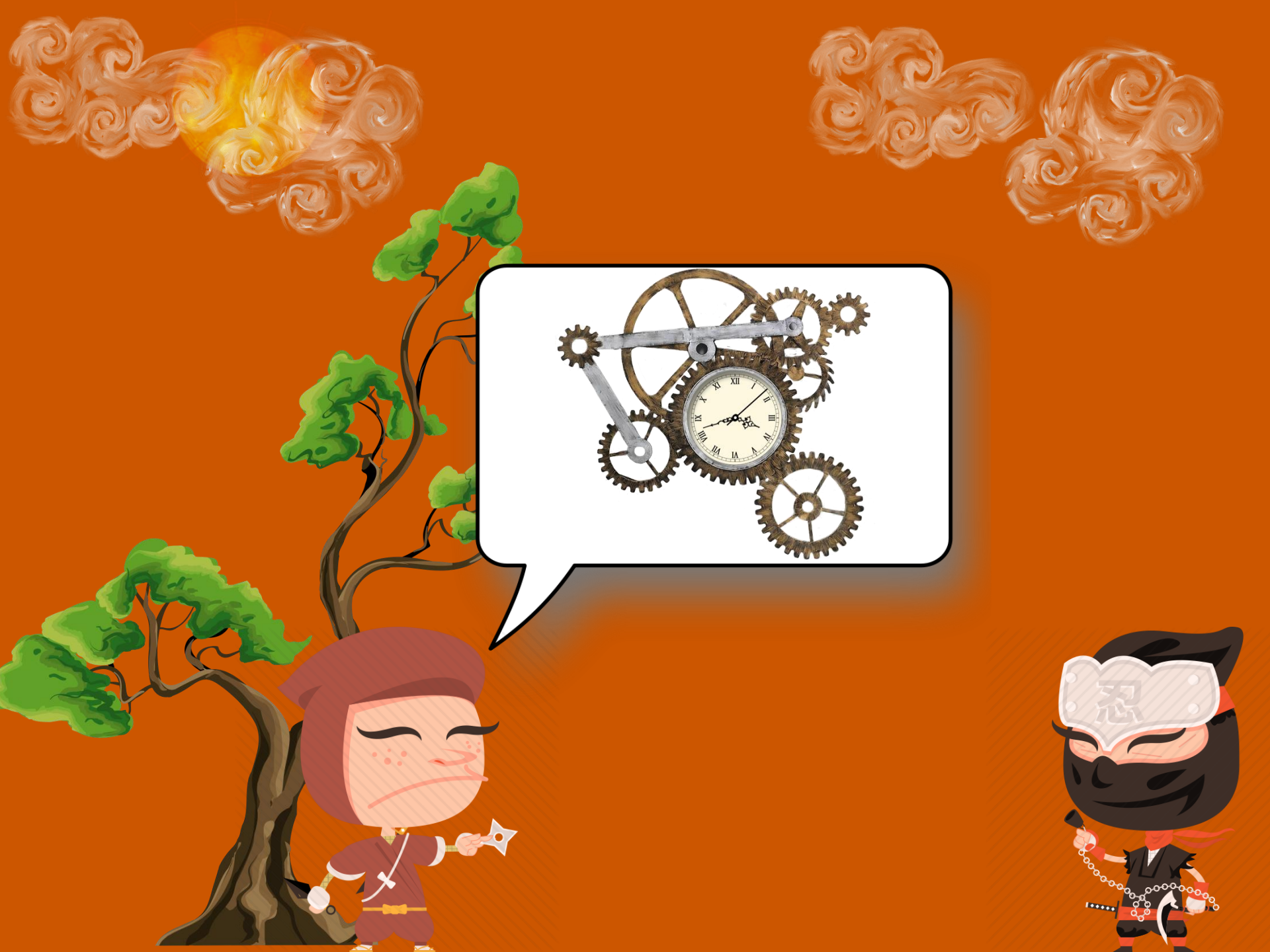
83 - 52 = 31

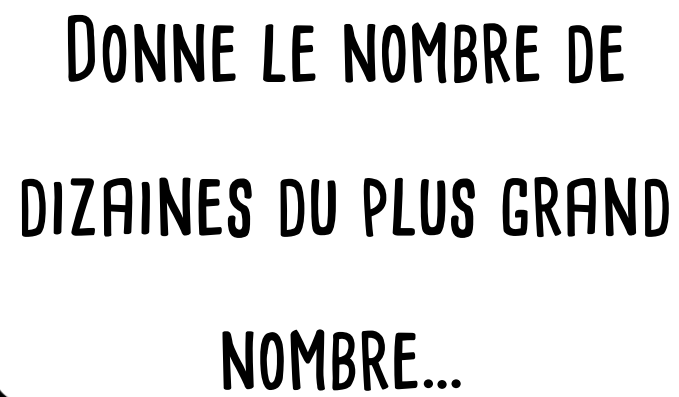




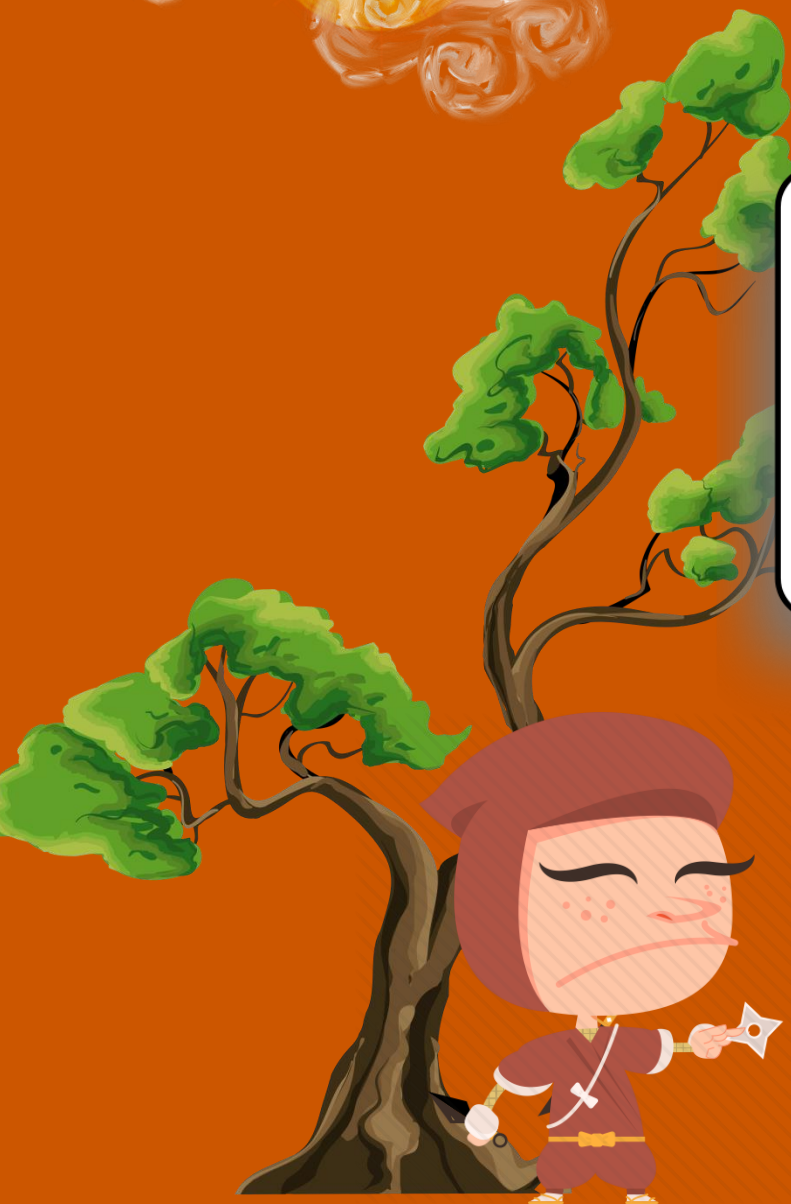
155 - 234 - 96







DONNE LE NOMBRE DE  
DIZAINES DU PLUS GRAND  
NOMBRE...





155 - 234 - 96

23

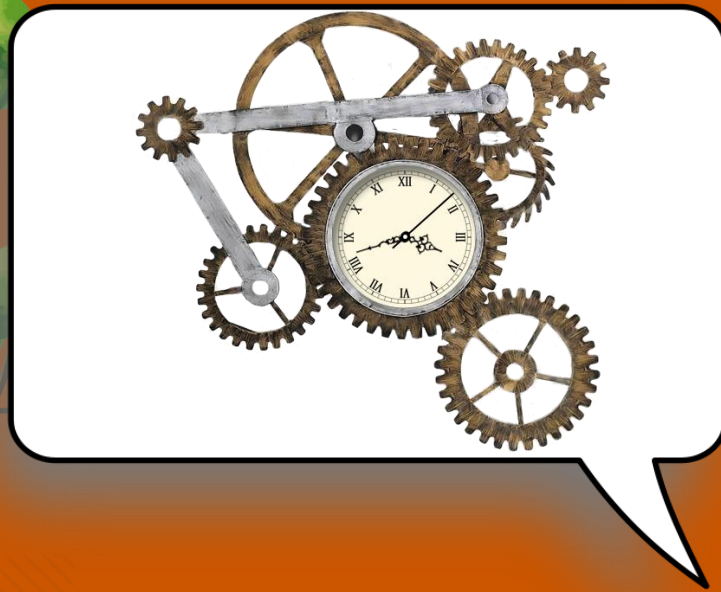
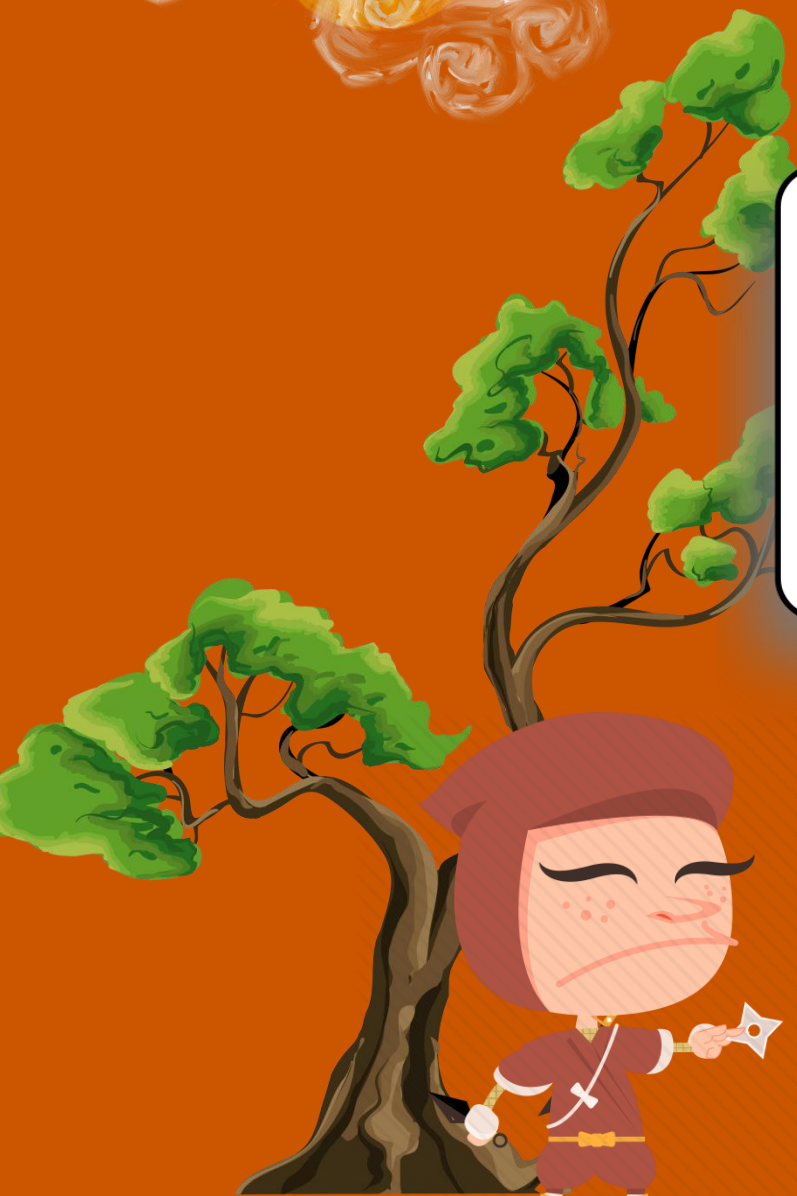
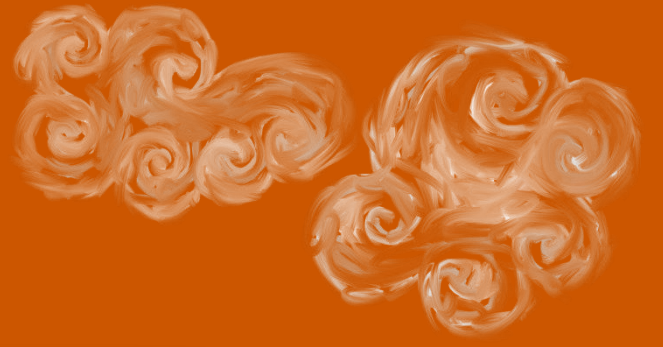
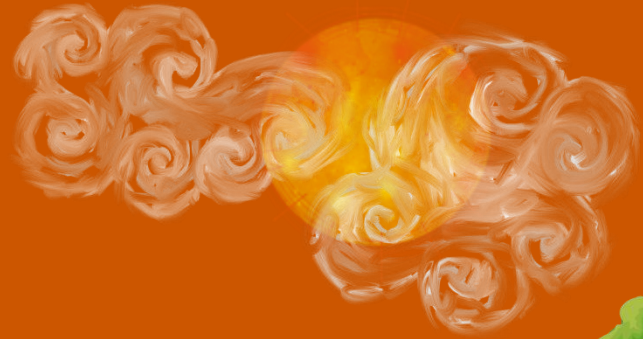





$149 - 37 - 78$







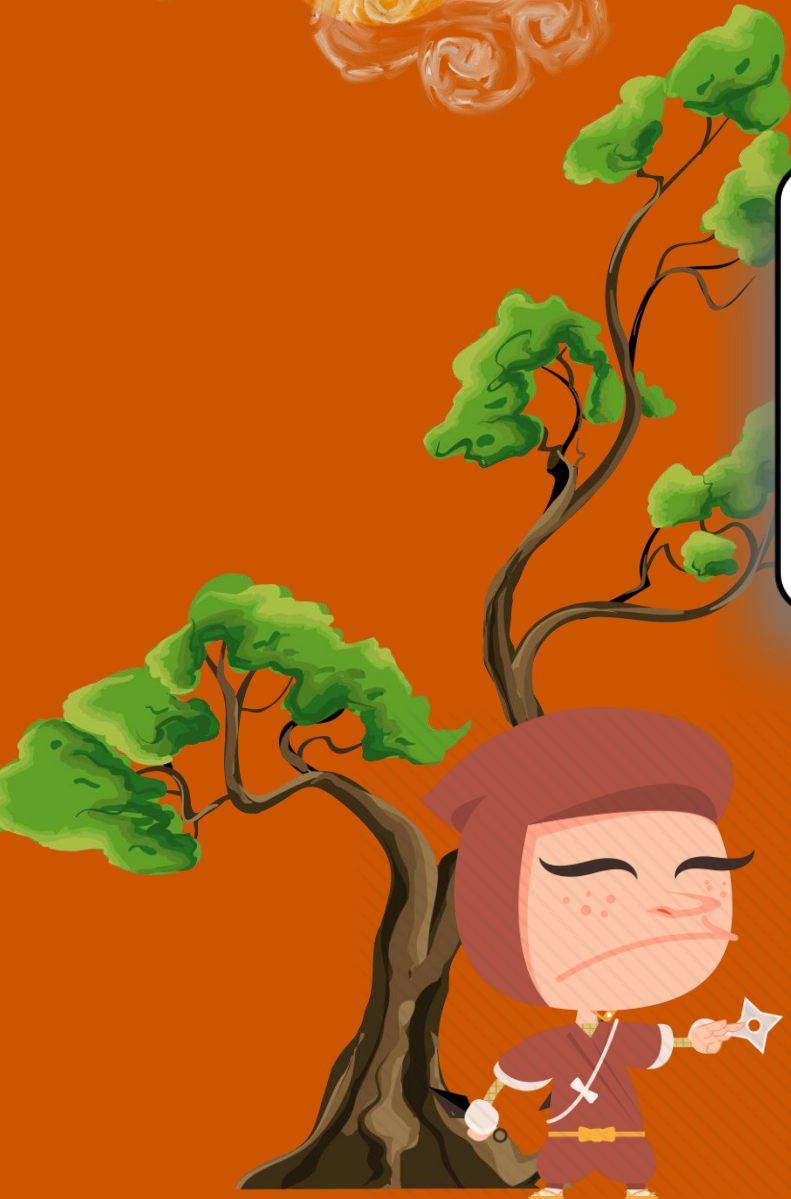



ENLÈVE 33 UNITÉS  
AU NOMBRE PAIR...

A white speech bubble with a black border and a tail pointing towards the bottom right. Inside the bubble, the numbers 149, 37, and 78 are arranged horizontally with minus signs between them. Below this row, the number 45 is centered.

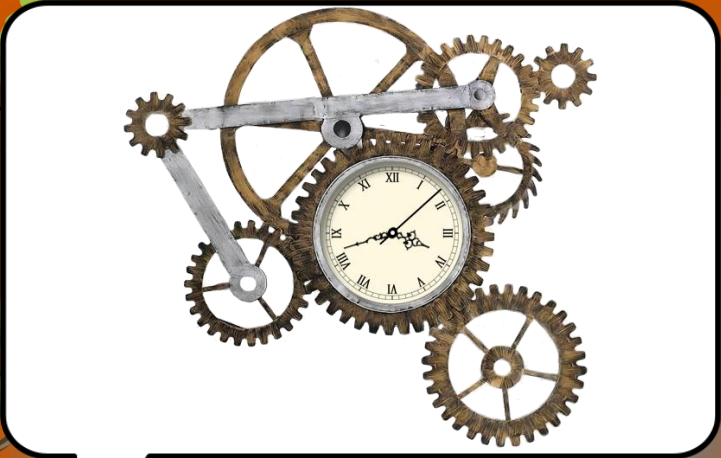
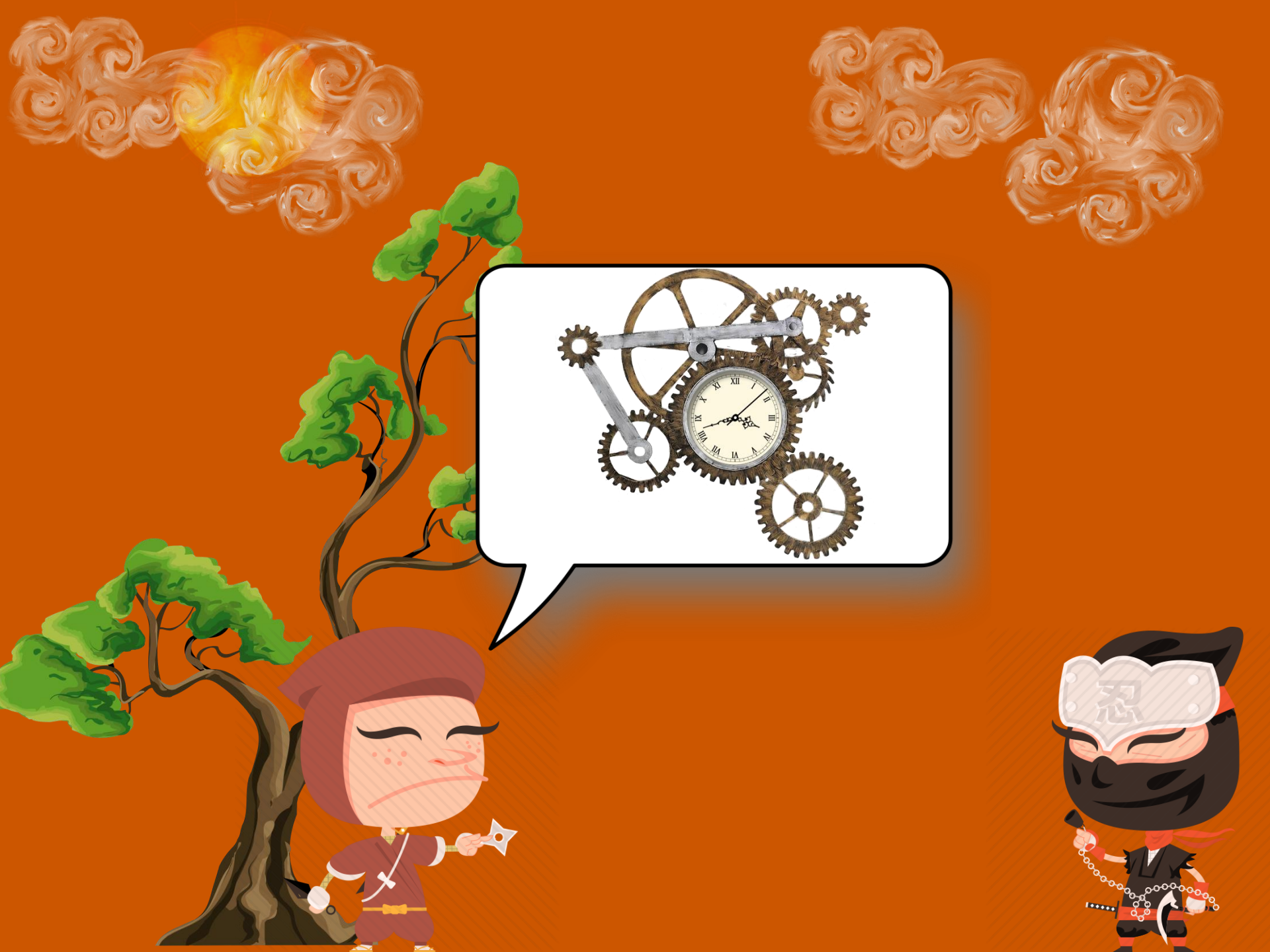
149 - 37 - 78


45





88 - 27 - 2





AJOUTE 9 AU  
NOMBRE IMPAIR...


$$88 - 27 - 2$$

$$36$$





FIN